



Sunshine Tour Championships



SHOWING SCHEDULE 2023

Friday 15th, Saturday 16th & Sunday 17th September
at ALL ENGLAND SHOWGROUND, HICKSTEAD
West Sussex, RH17 5NU

Class Entries open online: Sunday 6th August
Class entries open by post: Monday 7th August
Initial Entries close: Thursday 10th August

Entries online:
www.sunshinetour.co.uk

Entries by post:
Download entry form from www.sunshinetour.co.uk
Post to: Sunshine Tour, Great Bookham Equestrian Centre, Dorking Road, Great
Bookham, Surrey, KT23 4PZ

Late entries 12th - 18th August (subject to availability and surcharge)

Email: info@sunshinetour.co.uk
Tel: 01372 451458 (from Tuesday before show 07904 898696)

One Club for every rider

The Harry Hall One Club includes £10M public liability & £10K personal accident cover. Plus access to free legal advice, up to 30% off at HarryHall.com & free delivery all year round.

Whether you own 1 horse or 10 horses, want to cover yourself or your family, simply enjoy riding a friend's horse occasionally or loan a horse. We have a membership plan to protect you.



Gold

Join from £4.¹⁵ Per Month

For the ones
who love riding

Covers up to 4 family
members and 4 horses



Gold Plus

Join from £5.⁴⁰ Per Month

For the ones who
love competing

Includes affiliated event
cover for up to 4 family
members and 4 horses

New



Platinum

Join from £6.⁵⁰ Per Month

For the ones who
own up to 10 horses

Includes affiliated event
cover for up to 4 family
members and 10 horses



New

Enhanced Policy

Cover for broken bones

Accidents can happen. Our brand new Enhanced membership includes rider fracture cover. Available in Gold, Gold Plus and Platinum packages.

Free gift!

Join today and get a free gift. Plus we donate to equine charities when you join, insure or shop with us.

Get set up in minutes
Visit harryhall.com or call 01274 711011

Harry Hall International Limited is authorised and regulated by the Financial Conduct Authority (FCA) Firm reference number 968047. Underwritten by Equario Insurance (Guernsey) Limited. Terms, conditions, and territorial limits apply. Insurance cover limited to United Kingdom residents only. Excludes Channel Islands. Visit harryhall.com/oneclub/terms-and-conditions for full terms. Prices correct at time of print 2023. Harry Hall reserves the right to amend the price at any time. ** See T&C's harryhall.com/delivery-and-returns *** Epq is authorised and regulated by the Solicitors Regulation Authority (SRA number 645296). Epq is not insured or set up to advise on legal issues in Isle of Man or Channel Islands.



THE NATIONAL PONY SOCIETY



Why join the NPS?



ONLY the person who **OWNS** the pony needs to join!
NO ADDITIONAL FEE for your rider-handler-producer-pony/ponies!

**excluding HOYS/RIHS*



ANY suitably sized person can ride **ANY** plaited pony in open NPS classes.



NPS membership includes **THIRD PARTY LIABILITY INSURANCE**.

Whether you have a worker, lead rein, junior or open, or like to compete in hand, plaited or M&M, the NPS is the SOCIETY for YOU!!

Join now!



Online or call the friendly team in the office who will be only too happy to help you.

Scan me



www.nationalponysociety.com 01420 88 333



SUNSHINE TOUR

INTRODUCTION



Congratulations on qualifying for the Sunshine Tour Championship! We're thrilled to be able to offer you the chance to compete on the 'hallowed turf' of England's most famous showground, The All England Jumping Course at Hickstead.

Our aim is to put on a fun and exciting championship show, run to the highest standards possible whilst maintaining a friendly, inclusive atmosphere. **The ethos of this competition as an amateur & unaffiliated championship is very important** to us, our sponsors and our competitors, so we request that all participants **respect the spirit** of restrictions, **not necessarily just the letter of the law**. In some cases competitors and/or horses can have lightly competed in affiliated competition, but 'professionals' are excluded (see 'rules & conditions'). We have tried very hard to keep entry restrictions relevant and realistic; if you are in doubt about whether you are genuinely eligible to compete or which section (tour) you should compete in, please email info@sunshinetour.co.uk for clarification.

You may have more than one class to choose from, relevant to your original qualification. There are 4 sections, called 'Tours': Mini Tour, Small Tour, Grand Tour and Trophy Tour. As a guide, the lower levels are for beginners and novice / less experienced combinations and higher level are for those who are more experienced or competitive. **Read the class notes and restrictions carefully** to ensure you enter the correct class for your own and your horse's experience and previous winnings.

If you find that you are **overqualified** for the championship class that you originally qualified for, either because of restrictions or because you are now competing at a higher level then **you can change to a higher level**. For example: in dressage if you qualify in Prelim, but don't fit within the restrictions you could enter Novice, if you fit within those rules; in jumping if you are over qualified for 70cm then you can change to 75cm or above; in showing if you are outside the restrictions for a Small Tour class, you can move to a Grand Tour class instead. Horses/riders that have more than the allowed points or placings, but **NONE earned since 1st January 2021** (for showing at RIHS, Olympia & HOYS it's 1st January 2019) are eligible to compete. You can contact HQ for clarification on info@sunshinetour.co.uk

We hope that you will join us in creating a fun and fair competition for all and enjoy yourself! **Good luck!**

Many thanks to our wonderful sponsors & supporters

for their generous and enthusiastic support and helping make the Sunshine Tour Championships
such a special experience for everyone!

Please visit their website and Facebook pages to find fantastic products and services.

Allen & Page	www.allenandpage.com	National Pony Society	www.nationalponysociety.com
Beewear	www.beewear.co.uk	Pro Ponies	www.proponies.co.uk
Bloomfields Horseboxes	www.bloomfields.co	RM1 Alvahorse	www.alvahorse.co.uk
Boys Ride Too Magazine	www.boysridetoomagazine.com	Redpost Equestrian	www.redpostequestrian.co.uk
Equine Exceed	www.equinexceed.com	Saracen Horse Feeds	www.saracenhorsefeeds.com
Equipacs	www.equipacs.co.uk	SBM Photographic	www.sbmphotographic.co.uk
Farm & Stable Supplies	www.farmstable.com	Area 8 Side Saddle Association	www.sidesaddleassociation.co.uk
Harry Hall	www.harryhall.com	The Showing Register	www.theshowingregister.co.uk
Lafond Browbands	via Facebook	Veteran Horse Society	www.veteran-horse-society.co.uk
Mayes & Scrine Equine Vets	www.mayesandscrine.co.uk	Welsh Pony Plaques	via Facebook



SUNSHINE TOUR SHOWING CHAMPIONSHIPS



Summary of Contents

Entry Condition & Deadlines	Page 6
Admission, Parking, Vaccinations, Passports & Competitor Numbers	Page 7
Stabling and Camping Information	Page 8
Showing Information and Restrictions	Pages 11 & 12
Timetable	Pages 13 - 15
Friday Classes	
Showing Training & Talent Spotting: Classes S1 - S4	Page 17
Novice & Newcomer Championships: Classes S5 - S7	Page 18
Saturday Classes	
Fun Showing Championships: Classes S8 - S11	Page 20
Versatile Championships: Classes S12 - S14	Page 21
Top Turnout Championships: Classes S15 - S17	Page 22
Lead Rein and First Ridden Championships: Classes S18 - S23	Page 23
Veteran Championships: Classes S24 - S27	Page 24
Working Hunter Pony Championships: Classes S28 - S31	Page 25
Working Hunter Championships: Classes S32 - S33	Page 26
Sunday Classes	
Starters Showing Championships: Classes S34 - S36	Page 28
Equitation Championships: Classes S37 - S40	Page 29
Rehabilitated Rescue Championships: Class S41	Page 30
In-Hand Pony Championships: Classes S42 - S46	Page 31
In-Hand Horse Championships: Classes S47 - S52	Page 31
Ridden Pony Championships: Classes S53 - S56	Page 32
Ridden Horse Championships: Classes S57 - S63	Page 32
Side Saddle Championships: Classes S64 - S65	Page 33



Providing editorial coverage throughout the year of Sunshine Tour qualifiers.

Full showing editorial coverage of The Sunshine Tour Championships.

Buy your copy at
www.theshowingjournal.co.uk

Follow us on Facebook
[www.facebook.com/
TheShowingJournalMagazine](https://www.facebook.com/TheShowingJournalMagazine)



The Showing
REGISTER



**We are passionate about showing
and helping you achieve your
showing ambitions at ALL levels!**

*We offer training, advice and shows for all rider
experience levels and all horse and pony breeds and
types.*

Email your enquiries to
info@theshowingregister.co.uk
www.theshowingregister.co.uk
Find us on social media



Entry Conditions & Deadlines

QUALIFICATION & ELIGIBILITY

Pre-qualification is required to attend the Sunshine Tour Championships. For each qualification number issued you can enter one championship class. You can enter on different days and in different Tours, subject to the restrictions for each class. Both horse and competitor **MUST** comply with the restrictions set for each championship class entered. **You are responsible for checking eligibility to compete.** Competitors found to be competing, who do not comply with the relevant restrictions are liable to have entries cancelled without refund and forfeit any placing, or prizes already awarded.

Qualification is not a guarantee of your entry being accepted. Some classes may fill before closing date. If your class is full, there might be an alternative class to choose or you can join a waiting list.

Tours & Range of Classes: You can compete on more than one day and more than one Tour, if you fit the restrictions for the lower Tour. The range of classes entered by each horse/pony and rider/handler combination must be a suitable for the capability of the combination. Specific restriction apply for lead rein and first ridden competitors, for safety and fairness. See individual class descriptions for details.

ENTRY INFORMATION & DATES

Class & Stable Entries Open Online from 8am Sunday 6th August. By entering online you will know immediately if your entry is successful. **Different disciplines may open at slightly different times**, see website prior to entry opening for details at www.sunshinetour.co.uk

Class & Stable Entries by Post Open from Monday 7th August. Download entry from at www.sunshinetour.co.uk; we recommend recorded delivery; there is an admin fee. You will not know if your entry is successful until confirmed by Sunshine Tour.

Initial Class Entry Closing Date: Online: 8am Thursday 10th August. By post: first post Thursday 10th August.

Stable Entry Closing Date: Online & Post: Friday 18th August.

Stabling & Camping: Separate booking systems for stabling & classes, we advise that you book your class entries before stabling. There is very good availability for temporary stabling, but brick stabling sells out very quickly. Bedding & hay, camping & electric hook-up can be booked via stable entries booking system.

Waiting List & Late Entries: Subject to availability, waiting list & late entries may be offered during the period 12th to 18th August.

SHOWING ENTRY FEES

Championship Classes: £28.00; **Starters & Fun Championship Classes:** £26.00; **Training Classes:** £24.00.

Medical & Safety Charges: £5.00 medic charge per horse/competitor combination per day for one class; £7.50 medic charge for two classes or more per horse/competitor combination per day. Overpayments of medic fee will be issued by cashback on or after 21st August.

WITHDRAWALS & AMENDMENTS

Withdrawals & Amendments during initial entry period: no penalty.

Withdrawals After Initial Closing Date: Withdrawals are only accepted for acute medical conditions and must be submitted in writing accompanied by a vet's or doctor's evidence. Withdrawals submitted: 11th to 20th August may be eligible for 75% refund; 21st to 31st August 50% refund; 1st September to 7th September 25% refund; 8th September onward - no refund for any reason.

Amendments After Initial Closing Date: Only minor amendments accepted, subject to organisers discretion and may incur a £5 fee.

START TIMES & DRAWN ORDERS

Times & start lists are published by Monday 4th September on www.sunshinetour.co.uk **First classes of the day can start as early as 7.30am and last classes may finish as late at 7.00pm.**

Dressage competitors are allocated individual start times. **Eventers Challenge & Show Jumping** classes are drawn order and each class is given a start time. **Showing** classes are given start times.

Many thanks to our lovely showing supporters

TEAM HOLDER

The Showing
REGISTER



THE NATIONAL PONY SOCIETY

Admission, Parking, Vaccinations, Passports & Competitor Numbers

ADMISSION, ACCESS & OPENING TIMES

International Arena: Strictly no access at any time, day or night, not even people on foot!

Parking & Stabling: Access via horsebox entrance post code RH17 5NU. Wednesday access from 4pm (**not before**) until 10pm (**not after**); Thursday - Sunday: 6am to 9pm, later admission **only** by special arrangement.

Showground: Access via the pedestrian/horse bridge from the parking and stabling areas or via main entrance for spectators vehicles, post code BN6 9NS. Areas within the showground include:

Competition & Warm-Up Arenas: Wednesday: no access to warm-up arenas; Thursday - Sunday; 6.30am until end of competition.

Secretary & Show Office: Show days from 7am-7pm.

Showground Catering: Astore Catering & The Curry Squad open daily Thursday - Sunday; Clubhouse open Wednesday evening and Thursday - Sunday. **Stable Field Catering: NEW! Friday & Saturday evening** - special feature catering outlets in stable field area.

Bicycles, Scooters & Mobility Vehicles: **On the showground:** only mobility scooters and pushchairs are permitted on the showground. Bicycles, personal scooters or any other wheeled vehicles are not permitted. **In the parking & stabling fields:** Mobility scooters are permitted, but access is on a slope and parking is on grass, so may not be suitable for all type of mobility vehicle. Moving around the stable fields with bicycles and personal scooters is permitted, provided they are used in horse friendly manner and do not cause nuisance to others. Vehicles cannot be used to move around the stable field, once parked kindly remain in your slot until you leave.

PARKING ARRANGEMENTS

Horseboxes and trailers, plus vehicles for camping should enter via the horsebox entrance, post code RH17 5NU. **Passes will be issued on arrival at the show.** Parking is free, all vehicles must display a valid parking pass, with vehicle registration number.

Accompanying cars, including grooms and supply vehicles park separately to horseboxes and trailers. ALL cars entering via the horsebox entrance will be directed to park in the Groom's Car park, adjacent to lorry parking fields - no exceptions! Cars that park (or re-park in the night!) within lorry parking area, will be towed at owners expense.

Parking or camping with friends is **only** possible if you arrive together, **you cannot reserve a space for someone arriving later.** Parking for vehicles with electric hook-up is separate from those without electric hook-up.

For spectators and supporters car parking, with easy access to competition arenas, shopping and catering - enter via Hickstead's main entrance just off the A23, post code BN6 9NS. No ringside parking is available, but disabled access from car parking is possible.

Camping parking arrangements – see next page on Stabling & Camping.

DECLARATIONS & BRIDLE / COMPETITOR NUMBERS

Declarations are taken at ringside, you must declare in good time for your class/time/drawn order before competing. Missing your drawn order/start time/start of class is likely to result in elimination. Competitors are not required to declare at the Secretary's.

Bridle / Competitor Numbers: All horses **MUST** display their bridle number, **AND wear a bridle**, whilst on the showground, even if walking in-hand (not necessary in stable field). **All numbers are 4-digit**, you can provide your own number disc or buy from show office for £5. You can display your number on left side of bridle, left side of saddle cloth or left armband, as long as it is **clearly visible**.

VACCINATION & PASSPORTS

ALL horses/ponies must have up-to-date annual influenza vaccination or have completed at least TWO initial vaccination injections. In either case, **the last injection must not have been given after Wednesday 6th September 2023.**

Passports must be presented to the Stable Manager when claiming your stable. Day competitors must have passports available for inspection on arrival or on demand by Security or Stewards in parking area. Not required at ringside unless requested.

SBM
photographic
Event Photography
with On-Site Printing

Stabling & Camping at Hickstead

DAYTIME STABLING

Stabling Type: Temporary stabling (not brick) may be available for daytime bookings.

Day Stables: Subject to availability, £25/day. Bookings are taken at the show and cannot be pre-booked with entries. Enquiries about availability and bookings are taken by the Stable Manager, situated at top of stable field (not by show secretary in showground). Day stable occupancy is from arrival until 5pm; later occupancy sometime possible, subject to availability - check with Stable Manager.

OVERNIGHT STABLING

Stabling Type: Brick stable - size varies; Temporary - 3mx3m. **NOTE:** Brick stabling sells out very quickly, there is good availability for temporary stabling. Stallions should book brick, and extra large horses and stable-breakers are advised to book brick!

Overnight Stabling: Check-in with the stable manager on arrival, you must present your horses' passports. **Wednesday: earliest occupancy is 5pm, latest check-in is strictly 10pm.** Late arrivals only permitted by special arrangement for emergency reasons. **Thursday - Sunday: occupancy is from 6pm on night of booking, until 5pm the following day.** If you are arriving earlier in the day, you will park in day parking area until your stable is available. You might be able to occupy your stable earlier, ask Stable Manager on the day.

Stabling Together: Stabling is allocated on arrival. Although you cannot prebook stabling together, it is usually possible to stable with friends **if the first person in your group checks-in the whole group** (all passports must be presented). Subject to availability and at the discretion of the Stable Manager.

Stabling Condition: Hickstead stabling is used throughout the season for various shows and will have some bedding, but the coverage varies. Your stable should be (reasonably!) clean and in good (but used) condition when you arrive, any issues should be reported to the Stable Manager. All stables are semi or fully deep litter, if you choose to dig out to the base you will need a considerable amount of bedding to re-bed the stable. Paper, cardboard or straw bedding is not permitted. Muck heaps are situated at the end of each stable block, you are required to bring your own tools, wheelbarrow and stable equipment - buckets, feed bowls, haynets etc.

Stable Deposit & Retrieval - £10 CASH DEPOSIT IS REQUIRED FOR ALL STABLES ON ARRIVAL. Please retain your deposit / booking slip. Your stable is to be left clean and tidy in order to collect your deposit on departure. You may be required to show proof of stable condition and return your stable allocation/deposit slip (issued on arrival).

CAMPING

Camping overnight: people staying in a competitors' horsebox is free. **NOTE! A maximum of 3m in addition to your vehicle is permitted for camping/relaxing arrangements.** Additional space, caravans, campervans, separate horseboxes and oversized tents can be booked at £20/night (not available with electric hook-up). You can **ONLY** camp together if you arrive together or camp in outer field.

Electric Hook-Up: Booking is valid from 5pm on day of booking until 5pm the following day, £38.50/period. Please bear in mind if you have items that must be kept cold, you will not be able to access electric hook-up early. Your booking is for ONE vehicle or tent and cannot be split between all your friends!! Additional camping space (over 3m) is not available in electric hook-up parking areas and friends without hook-up cannot park next to or necessarily near you. Your hook-up point may be distant from your parking space, you are advised to bring at least **two** caravan style electric cables.

EXTRAS & FACILITIES

Bedding, hay & haylage: Bring your own or pre-order (price per bale to be confirmed). Limited amounts of bedding, hay and haylage are available to buy on the day. **Buyer is responsible for collection**, we suggest you bring a wheelbarrow. Collection times may be limited to less busy times (afternoons).

Showers, Toilets & Washdown: In the main stable field, there are showers and permanent toilets. Outer parking areas have temporary toilets. There is a washdown for horses at top of main stable field - fair use policy applies, please be quick at busy times.

PASSPORTS & VACCINATIONS - See previous page.

BOOKINGS & PRICES

Stable Bookings: Online at www.sunshinetour.co.uk from 6th to 18th August; you will know immediately if your entry is successful.

Post from 7th to 18th August; download entry form at www.sunshinetour.co.uk; we recommend recorded delivery; there is an admin fee; you will not know if your entry is successful until confirmed by Sunshine Tour.

Prices: Temporary stable overnight £50/night; Brick stable overnight £55/night; Temporary stable daytime £25/day; Additional overnight vehicle/camping space £20/night; Electric hook-up £38.50/night; Hay, haylage & bedding - price TBC.

The logo for Beewear, featuring the word "BEEWEAR" in white, bold, sans-serif capital letters on a red rectangular background with rounded corners and a thin white border.

Official merchandise supplier at the
**2023 Sunshine Tour
Championships**
www.beewear.co.uk

Veteran Horse Society is delighted to be the sponsors of the Veteran Horse or Pony of the Year award



DIAMANTÉ DEL REY
AGED 18



KNAVESGREEN HONEY PIPPIN
AGED 26



COTTRELL RIVERDANCE
AGED 25

NATIONAL VETERAN CHAMPIONSHIPS

29th September - 1st October 2023

Over 150 classes and £1,000 prize money | Arena UK | Lincolnshire



TAKING THE BISCUIT
AGED 23



MAYSONG
AGED 25



SILVER HENRIETTA
AGED 30

THE LARGEST SHOW DEDICATED TO
VETERAN HORSES AND PONIES IN THE UK



For membership details and further information please visit
the website www.veteran-horse-society.co.uk

Provided by Beewear Ltd



Jackets, gilets, hoodies & polo shirts will all be available at the Sunshine Tour Championships 2023 to purchase from our trade stand.

Garments include either a list of competing horse names, or your competition discipline/s on the back—there is even the opportunity to highlight your horses name with a crystal!



Personalised merchandise will also be available on our website after the event

beewear.co.uk

SHOWING INFORMATION

RULES & RESTRICTIONS

The most relevant rule book is used as guidance: Pony classes - British Show Pony Society; Horse classes - British Show Horse Association; Veteran classes - Veteran Horse Society; Native classes - National Pony Society; Side Saddle classes - Side Saddle Association; Mixed type classes - The Showing Register. For details on each rule book, please visit the relevant website.

Competitor numbers: Must be CLEARLY visible on left side, you can display on bridle disc, saddle cloth or armband (**not** a back number).

Qualification and Restrictions: For each qualification number issued, you can enter **one** championship class. You must comply with the restrictions for your class on the day of the championship competition. Competitors not complying with the restrictions and found to be competing, may have their entry cancelled without refund and/or placing removed and prizes forfeited.

Changes Permitted from Qualification Class to Championship Class: At the discretion of the organisers, showing competitors can enter a different class to their original qualification. Absolutely no changes of horse/pony or rider/handler are permitted.

Tours & Range of Classes: You can compete on more than one day and more than one Tour, if you fit the restrictions for the lower Tour. The range of classes entered by each horse/pony and rider/handler combination must be a suitable for the capability of the combination. Specific restriction apply for lead rein and first ridden competitors, for safety and fairness. See individual class descriptions for details.

Safety: Protective headgear is compulsory for all ridden classes and junior handler. **Riders may not remount in the ring** or continue their class, following a fall during a class.

Stallions & Youngstock must be shown by a competent and experienced competitor. The bridle or halter must be suitable to handle and if necessary restrain the animal. Stallions must display tail ribbons. Some classes do not allow stallions. Any animal deemed to be causing a nuisance or danger to others may be required to leave the competition, warm-up or showground at the discretion the judge or steward.

TACK & ATTIRE

Grand Tour classes require correct turnout of horse and competitor. **Small Tour classes** require neat and tidy showing style turnout and correct tack. **Starters and Fun classes** do not require specific showing turnout or tack.

Attending in the Ring: Grooms attending for strip/trot up section must wear a hat (not necessarily protective). All types of assistant (leaders and helpers) should be smartly turned out - the turnout of assistants is included in the judging of competitors' overall presentation.

Jewellery & Make-Up: the wearing of jewellery is not permitted for riders or handlers, except small stud type earrings. Horse make-up is not encouraged and should be kept to a minimum.

Bridles & Reins: Bitless bridles are permitted in 'any bridle' classes, Snaffle bridles are required for lead rein & first ridden classes. Other than lead rein (in relevant classes), additional attached reins are not permitted, e.g. grass or side reins.

START TIMES, COMPETITION ARENAS & WARM-UP ARENAS

Class start times are published from 4th September. Please allow yourself plenty of time to arrive, park and make your way to the warm-up arena, it can take considerably longer than a day-to-day show. We make very effort to keep classes running on time, but class start times are approximate and circumstances may influence actual start times on the day.

Entering & Clash of Classes: it is the competitors responsibility to choose classes from the draft timetable that are unlikely to clash, including factoring in multiple rides or other classes entered. We make every effort to minimize changes from draft to confirmed timetable, but this is not always possible - any new clashes must be raised with organisers within 48 hours of confirmed timetable being published.

Clashes on the day caused by classes running late - we will do our best to offer an alternative class or allow late entrance to a class already started. If you are aware of tight timeline between classes, or potential clashes on the day please speak to the steward about early exit from a class or informing the next class of your intention to compete.

Declarations: **You must declare in good time with the ring steward**, failure to declare may result in the competitor not being able to join the class. This decision is at the judges discretion, but may also dictated by the format of the class. We cannot guarantee to offer an alternative class for late arrivals or missed classes, for any reason. Your entry may be forfeited without refund.

Surfaces: the majority of showing classes are held on grass arenas, however some classes may be held on or moved to sand arenas.

Warm up is on grass. Warm up and collecting rings may be restricted to the competitors due in the next class. Lunging is not permitted.

ADDITIONAL CLASSES & OPEN CHAMPIONSHIPS

Training and Warm Up Classes are offered on Friday. Some classes include Talent Spotting for the TSR Championship 2024.

Open Championships are full championship classes available to enter in addition to your qualified classes. You do not need an additional qualification code to enter, but you must be taking part in another championship class. Open Championships include: Novice & Newcomer In-Hand, Ridden, Lead Rein, First Ridden, Working Hunter, Working Hunter Pony, Rehabilitated Rescue & Starters Showing.

SUPREME CHAMPIONSHIPS, CLASS FORMATS & PRESENTATIONS

Supreme Championships: Winner and reserve from each championship class are eligible to go forward to their Supreme Championship. Winner and reserve of each Supreme Championship are eligible for the Super Supreme Championship, held at the end of the day. If you qualify for a Supreme Championship that clashes with another class you have entered, you must choose which one you attend.

Format of Classes: see class information. **'Full format' ridden classes** include go-round with GROUP canter, plus gallop shown (NOT suitable for novice competitors), plus either judge riding or individual show and strip & trot up which requires a groom to attend in the ring. Classes include: Grand Tour Ridden Horse Championship, Ridden Pony Championships, Ridden Veteran, Working Hunter.

Individual Show should not exceed 2 minutes. Set pattern individual show may be required in any class, at the judges' discretion on-the-day.

Presentations mounted presentations are held in the arena for the at the end of each championship or supreme championship class.



SUNSHINE TOUR SHOWING CHAMPIONSHIPS

COMPETITOR RESTRICTIONS



Sunshine Tour championships are for amateur competitors with unaffiliated and novice horses/ponies. Professionals and professionally produced combinations are excluded from competing in the Sunshine Tour. Our definition of a 'professional' is someone who earns money from:

- Training, schooling or competing horses/ponies. Buying and/or selling or breaking in horses.
People who work with horses primarily for care, e.g. grooms, vet nurses and participate in day to day exercising of horses, but not schooling, training, competing or breaking client's horses are eligible to compete.
- Teaching and/or training riders.
Instructors who only teach in a riding school with riding school horses/ponies can qualify.
- Judging affiliated classes in the same discipline as your competition (paid or unpaid).

If you participate in 'professional' activities mentioned above, please respect the amateur nature of this championship and help your clients instead!

All Sunshine Tour Showing competitors, horse & ponies must not be professionally produced/trained for the show ring and must not be kept in training or livery (including DIY livery) with a professional / affiliated showing producer during the current year.

2023 SHOWING QUALIFICATION

Each Qualification Number allows you to enter one championship class:

TOURS are groups of classes, divided by competence and measurable points/winnings restrictions - please respect the spirit of each level as well as the letter of the law. **You CAN compete in both Small & Grand Tour Showing if you fit the restrictions.**

SMALL TOUR CHAMPIONSHIPS

Horses/Ponies

During the period 1st January 2021 to the date of this year's championship: horses/ponies **can** be registered with a showing or breed society but must **not** have won any affiliated class.

During the period 1st January 2019 to the date of this year's championship: horses/ponies **cannot** have competed in any affiliated showing class at RIHS, Olympia or HOYS (from 1st January 2021 for TSR HOYS Masterclass and Search for a Star).

During the period 1st January 2021 to the date of this year's championship: horses/ponies **can** have taken part in preliminary qualifying rounds of classes that do not require pre-membership of the society but must **not** have taken part in second rounds or championships.

Riders/Handlers

Riders/handlers **never** to have competed in showing classes at RIHS, HOYS or Olympia and must not be involved with schooling, training, breaking, producing or breeding show horses/ponies.

Cannot be currently listed on any showing panel and /or judge affiliated or unaffiliated showing classes; this restriction applies to paid or unpaid activities.

Cannot teach others to ride, except in a Riding School teaching clients **not** on their own horse/pony.

During the period 1st January 2021 to the date of this year's championship; riders/handlers **can** have taken part in preliminary qualifying rounds of classes that do not require pre-membership of the society but must **not** have taken part in second rounds or championships.

GRAND TOUR CHAMPIONSHIPS

Horses/Ponies

During the period 1st January 2021 to the date of this year's championship: horses/ponies **can** be registered with a showing or breed society and have been placed in first round competitions but must **not** have won a championship class.

During the period 1st January 2019 to the date of this year's championship: horses/ponies **cannot** have competed in an affiliated showing class at RIHS, Olympia or HOYS (from 1st January 2021 for TSR HOYS Masterclass and Search for a Star).

During the period 1st January 2021 to the date of this year's championship: horses/ponies **can** have taken part in second rounds of affiliated classes but must **not** have gone forward to the relevant final or championships.

Riders/Handlers

During the period 1st January 2019 to the date of this year's championship: riders/handlers must **not** have competed in showing classes at RIHS, HOYS or Olympia and must not be professionally involved with schooling, training, breaking, producing, breeding or judging show horses/ponies.

Cannot be currently listed on any affiliated showing panel and /or judge affiliated showing classes; this restriction applies to paid or unpaid activities.

Cannot teach others to ride, except in a Riding School teaching clients **not** on their own horse/pony.



Need help with your horse's show preparation? We offer a professional in-house grooming service to help you with plaiting, quarter marking and getting your horse show ring ready. Booking prior to the show is advised. Email info@sunshinetour.co.uk for details.



- Qualifying period ends 31st July 2023. Full schedule is published in June, entries open 6th August. Qualification is not a guarantee of entry availability.
- Timetable timings are approximate and are published only to give you guidance to plan your day. Accurate class start times are published from 4th September.**
- Each group of classes, and in some cases mid-group are given 'starting not before' times. Classes will not start before the time mentioned, but might start later.
- Winners & reserves from each championship class are eligible to go forward to Supreme Championship. Winners of Supremes can go forward to the Super Supreme.
- Rules for showing are guided by: British Show Pony Society, Veteran Horse Society, National Pony Society, British Show Horse Association & Side Saddle Association.

Friday 15 th September	
Ring 5A (grass) Training & Talent Spotting Classes <i>Sponsored by The Showing Register</i> <i>Starting not before 10.00am</i> S1 TSR In-Hand Horse & Pony Showing <i>to follow</i> S2 TSR Ridden Horse Showing <i>to follow</i> S3 TSR Ridden Pony Showing <i>All classes include talent spotting for the TSR Talent Spotting series for The Showing Register Amateur Rider & Handler of the Year 2024</i> Rosettes to all, kindly sponsored by The Showing Register	TSR Training Classes: A chance to run through the format of the type of the class that you've entered (in-hand or ridden), familiarise your horse/pony with the showground and rings and receive valuable feedback from an experienced judge, who will guide you through the whole process. Competitors can present themselves in show gear, fully 'turned out' or just neatly presented in 'normal' riding attire (you may want to bring a photo of your show attire to consult the judge on suitability). You are advised to present your horse in showing tack, but boots / bandages may be worn. Stallions and youngstock to be shown by suitably experienced handler/rider and appropriately bitted and clearly display tail ribbons. TSR Talent Spotting: All Training classes are part of the TSR Talent Spotting series for The Showing Register Amateur Rider & Handler of the Year 2024. Exhibitors can be Talent Spotted by the judge for the Final to be held at the TSR Summer Show 2024. Showing to Music: Exciting new training opportunity to give riders new to musical showing a chance to have a go, guided by an experienced trainer. No previous experience is needed, music and full training will be provided. About Novice & Newcomer Championship (Friday): Classes S5, S6 & S7 are championship classes open to qualified and unqualified combinations, with rosettes awarded to 1st to 10th, champion & reserve champion are awarded sashes and are eligible to go forward to the Novice & Newcomer Supreme Championship. The 4 highest placed handlers/riders will also qualify for the 2024 TSR Showing Final. You do not have to be a TSR member to qualify or enter a final, the Rider/Handler qualifies and can enter any horse/pony in any number of Finals. Competitors MUST have their qualification record sheet signed by judge (available FREE from the TSR website). Full details at www.theshowingregister.co.uk
Showing to Music S4 Have-A-Go at Showing to Music <i>Ridden - all ages of rider and types of horse/pony welcome.</i> Novice & Newcomer Championship <i>Starting not before 2.00pm</i> S5 Novice & Newcomer In-Hand <i>to follow</i> S6 Novice & Newcomer Ridden Horse <i>to follow</i> S7 Novice & Newcomer Ridden Pony <i>to follow</i> Novice & Newcomer Supreme Championship <i>Kindly sponsored by</i>	Many thanks to our fantastic supporters TEAM HOLDER





Saturday 16 th September			
Ring 5A (grass)	Ring 5B (grass)	Roger Stack Ring (grass)	
<u>Fun Showing Championship</u> Starting not before 7.30am S8 Best Turned Out to follow S9 Lead Rein Equitation to follow S10 Best In-Hand Horse & Pony to follow S11 Best Ridden Horse & Pony to follow Fun Showing Supreme Championship	<u>Working Hunter Pony Championship</u> Starting not before 7.30am S28 Nursery Stakes Working Hunter Pony to follow S29 Novice & Newcomer Working Hunter Pony Starting not before 9.30am S30 Mountain & Moorland Working Hunter Pony to follow S31 Working Hunter Pony to follow Working Hunter Pony Supreme Championship	<u>Top Turnout Championship</u> Starting not before 7.30am S15 Condition & Turnout - In-Hand to follow S16 Condition & Turnout - Ridden to follow S17 Condition & Turnout - Lead Rein to follow Top Turnout Supreme Championship <u>Lead Rein Championship</u> Starting not before 9.30am S18 Novice & Newcomer Lead Rein Pony to follow S19 Lead Rein Show & Show Hunter Pony to follow S20 Lead Rein Mountain & Moorland Pony to follow Lead Rein Supreme Championship <u>Fun & Versatile Championship</u> Starting not before 12.30pm S12 Family Horse & Pony (supreme championship in Ring 5B)	
Demos & Showcase Classes: Starting not before 11.00am Foreign Breeds, Side Saddle & Showing to Music	<u>Working Hunter Championship</u> Starting not before 11.30am S32 Novice & Newcomer Working Hunter to follow S33 Working Hunter & Working Show Horse to follow Working Hunter Supreme Championship	<u>First Ridden Championship</u> Starting not before 1.30pm S21 Novice & Newcomer First Ridden Pony to follow S22 First Ridden Show & Show Hunter Pony to follow S23 First Ridden Mountain & Moorland Pony to follow First Ridden Supreme Championship	
<u>Veteran Championship</u> Starting not before 12.00pm S24 Young Veteran - In-Hand to follow S25 Mature Veteran - In-Hand to follow S26 Young Veteran - Ridden Can be on Lead Rein to follow S27 Mature Veteran - Ridden Can be on Lead Rein to follow Veteran Supreme Championship	<u>Fun & Versatile Championship</u> Starting not before 2.00pm S13 Pony Club Pony to follow S14 Riding Club Horse to follow Fun & Versatile Supreme Championship	Super Supreme Championship - to be held in Ring 5A, not before 5.00pm	



Sunday 17 th September		
Ring 5A (grass)	Ring 5B (grass)	Roger Stack (grass) OR Polo Arena (sand)
<u>Starters Championships</u> <i>Starting not before 7.30am</i> S34 Starters Best Turnout <i>to follow</i> S35 Starters In-Hand Showing <i>to follow</i> S36 Starters Ridden Showing <i>to follow</i> Starter Supreme Championship <i>to follow</i>	<u>In-Hand Horse Championship</u> <i>Starting not before 7.30am</i> S47 Riding Horse & Hack In-Hand <i>to follow</i> S48 Thoroughbred In-Hand <i>to follow</i> S49 Foreign Breeds In-Hand <i>to follow</i> S50 Hunter In-Hand <i>to follow</i> S51 Coloured Horses In-Hand <i>to follow</i> S52 Show & Traditional Cob In-Hand <i>to follow</i> In-Hand Horse Supreme Championship <u>Ridden Horse Championship</u> <i>Starting not before 11.00am</i> S59 Foreign Breeds Ridden <i>to follow</i> S60 Hunter Ridden <i>to follow</i> S61 Coloured Horse Ridden <i>Starting not before 2.00pm</i> S62 Show Cob Ridden <i>to follow</i> S63 Traditional Cob Ridden <i>to follow</i> Ridden Horse Supreme Championship	<u>In-Hand Pony & Youngstock Championship</u> <i>Starting not before 7.30am</i> S42 Youngstock <i>to follow</i> S43 Coloured Pony In-Hand <i>to follow</i> S44 Show Pony & Show Hunter Pony In-Hand <i>Starting not before 10.00am</i> S45 Mountain & Moorland In-Hand Small Breeds <i>to follow</i> S46 Mountain & Moorland In-Hand Large Breeds <i>to follow</i> In-Hand Pony & Youngstock Supreme Championship <u>Rehabilitated Rescue Championship</u> <i>Starting not before 12.00pm</i> S41 Rehabilitated Rescue Horse & Pony In-Hand & Ridden Equitation Championship <i>Starting not before 12.30pm</i> S37 Junior Handler 8 years & under <i>to follow</i> S38 Junior Handler 9-12 years <i>to follow</i> S39 Best Rider Open 13 years & over <i>to follow</i> S40 Best Rider Junior 12 years & under <i>to follow</i> Equitation Supreme Championship
<u>Ridden Pony Championship</u> <i>Starting not before 12.30pm</i> S53 Coloured Pony Ridden <i>to follow</i> S54 Show Pony & Show Hunter Pony Ridden <i>to follow</i> S55 Mountain & Moorland Ridden Small Breeds <i>to follow</i> S56 Mountain & Moorland Ridden Large Breeds <i>to follow</i> Ridden Pony Supreme Championship	Super Supreme Championship - to be held in Ring 5A, not before 5.00pm	

Don't miss the July issue

which includes our show report special as well as interviews with leading producers, archive photos, yard visits and much more.

Tell your friends to get their subscription to receive the UK's best-selling showing magazine direct to their door.



The UK's best-selling showing magazine is the perfect present for family and friends, delivered direct to their door every month.

The Showing Journal has everything for the showing enthusiast, complete with up-to-date show reports, news, features, interviews and much, much more.

ONLY £53.00 for 12 issues per year.

The Showing Journal

chosen and preferred... forget the rest, buy the best.

Easy ways to subscribe today...

1. Simply go to: www.theshowingjournal.co.uk
2. Call us on 01638 750382
3. Or complete the form below...

Title	Forename	Surname
Address		
Postcode		
Telephone		
Email		

Return to: The Showing Journal, PO Box 84, Mildenhall, Suffolk. IP28 9BL. with your cheque for £53.00 made payable to The Showing Journal.

☐ Please tick this box if you do not wish to receive details of offers from The Showing Journal.



SHOWING TRAINING CLASSES & THE SHOWING REGISTER TALENT SPOTTING

Friday 15th September 2023

SEE SHOWING INFORMATION PAGE for details on showing rules & restrictions, class start times, competition and warm up arenas, additional classes, supreme championships and presentations.

TSR Training Classes: A chance to run through the format of the type of the class that you have entered (in-hand or ridden), familiarise your horse/pony with the showground and receive valuable feedback from an experienced judge, who will guide you through the whole process. Competitors can present themselves in show gear and fully 'turned out' or just neatly presented in everyday riding attire. You are advised to present your horse in showing tack, but boots / bandages may be worn. Stallions: must be shown by a competent and experienced competitor; bridle / halter must be suitable to handle and if necessary restrain the animal; must display tail ribbons.

TSR Talent Spotting: Training classes S1 - S3 are part of the Talent Spotting series for The Showing Register Amateur Rider & Handler of the Year. Exhibitors can be chosen by the judge to be put forward for the Final to be held at the TSR Summer Show 2024.

NEW! Showing to Music: Exciting new training opportunity to give riders new to musical showing a chance to have a go, guided by an experienced trainer. Discover the joy of riding accompanied by a piece of music that really suits the paces of the horse and the personality of the rider. Showing to Music is an opportunity to smile and show off your individual style and 'knock the socks off' the judge! No previous experience is needed, all levels of riders welcome.



Additional Assistance: Competitors can be assisted or led. **Entry Fee:** £24.00

Stallions & Youngstock: To be shown by suitably experienced handler/rider, wearing appropriate bridle/halter and clearly display tail ribbons.

Kindly sponsored by The Showing REGISTER

- | | |
|-----------------|--|
| Class S1 | Sunshine Tour Training & Warm Up Class - In-Hand Horses & Ponies
Open to ponies 148cm & under and horses exceeding 148cm, of any type or breed.
Specialist tack/turnout is not required. |
| Class S2 | Sunshine Tour Training Class & TSR Talent Spotting - Ridden Horses
Open to horses exceeding 148cm, 4 years old & over of any type or breed. Specialist tack/turnout is not required, any suitable bridle is permitted. |
| Class S3 | Sunshine Tour Training Class & TSR Talent Spotting - Ridden Ponies
Open to ponies 148cm & under, 4 years old & over of any type or breed. Specialist tack/turnout is not required, any suitable bridle is permitted. |
| Class S4 | Have-a-Go at Showing to Music - Training Class
Open to ponies 148cm & under and horses exceeding 148cm, of any type or breed. No previous experience is needed, music and full training will be provided. Specialist tack/turnout is not required, any suitable bridle is permitted. |

The Showing
REGISTER



**We are passionate about showing
and helping you achieve your
showing ambitions at ALL levels!**

*We offer training, advice and shows for all rider
experience levels and all horse and pony breeds and
types.*

Email your enquiries to
info@theshowingregister.co.uk
www.theshowingregister.co.uk
Find us on social media





SHOWING CHAMPIONSHIPS

Friday 15th September 2023



NOVICE & NEWCOMER OPEN SHOWING CHAMPIONSHIP

Kindly sponsored by Team Holder

SEE SHOWING INFORMATION PAGE for details on showing rules & restrictions, class start times, competition and warm up arenas, additional classes, supreme championships and presentations.

Competitor Turnout: Specialist showing attire is not required, but turnout should be clean, tidy and showing style. Grooms assisting during a class e.g. for strip & trot up sections, **MUST** wear a hat (not necessarily protective) and suitable footwear.

Horse/Pony Tack & Turnout: Any bridle is permitted, no martingales or boots/bandages. Natives and traditionals can be shown in natural state, other breeds and types should be plaited or hogged.

Additional Assistance: Competitors are required to be independent except for lead rein riders or special needs (request dispensation with entry).

Class Format: See each class description for details of class format. **Entry Fee:** £28.00

Stallions & Youngstock: To be shown by suitably experienced handler/rider, wearing appropriate bridle/halter and clearly display tail ribbons.

Novice & Newcomer Championship is open to qualified and un-qualified horse/pony & competitors combinations.

Class S5 Novice & Newcomer In-Hand Championship

Small Tour Open to horses/ponies any height/type shown by novice competitors and more experienced competitors with very novice, nervous or young horses/ponies. Horse/pony & handler combination not to have won 4 or more in-hand showing classes (other than fun or novelty classes) in the current year. Class will include each horse being inspected at halt, walk and trot. Judging will be on conformation, action, manners, condition and presentation.

Class S6 Novice & Newcomer Ridden Horse Championship

Small Tour Open to horses exceeding 148cm of any breed/type shown by novice competitors and more experienced competitors with very novice, nervous or young horses. Horse/rider combination not to have won 4 or more ridden showing classes (other than fun or novelty classes) in the current year. Class will include group walk and trot, and each rider will have up to 2 minutes to give a freestyle show which must include canter. In-hand trot up section may be included at the judge's discretion. Judged on conformation, manners, way of going, type and condition. Lead rein or assistance in the ring not permitted.

Class S7 Novice & Newcomer Ridden Pony Championship

Small Tour Open to ponies 148cm & under, 4 years old & over of any type or breed shown by novice competitors. Pony/rider combination not to have won 4 or more ridden showing classes (other than fun or novelty classes) in the current year. Class will include group walk and trot, each rider will have up to 2 minutes to give a freestyle show which must include canter (lead rein riders not required to canter). In-hand trot up section may be included at the judge's discretion. Judged on conformation, manners, way of going, type and condition. Assistance in the ring not permitted, except lead rein competitors.

Novice & Newcomer Showing Supreme Championship

1st & 2nd placed exhibits from classes S5 - S7 compete for the Novice & Newcomer Showing Supreme Championship.

SUNSHINE TOUR STARTERS, STEPPINGSTONE & SPRINGBOARD PRIZES

Showing prizes generously sponsored by The National Pony Society, Lafond Browbands, British Show Pony Society & Team Holder

STARTERS can win a fabulous crystal tipped show cane, generously donated by Lafond Browbands..

STEPPINGSTONES prizes are kindly arranged by Sue Palmer & The National Pony Society. Award winners can win a training session or showing make-over by a professional showing producer:

John Harvey of Team Harvey, Hertfordshire. | Katy Marriot - Payne, professional showing producer, Northamptonshire. | Scott Dixon, international showing rider & producer, Essex.

SPRINGBOARD winners receive a free membership to a showing or breed society of their choice: BSPS, NPS, CHAPS or BSHA.



TEAM HOLDER



THE NATIONAL PONY SOCIETY



BLOOMFIELDS HORSEBOXES

Leading our industry through Innovation not Imitation



+ 44 (0) 1623 869779
info@bloomfields.co | www.bloomfields.co



SHOWING CHAMPIONSHIPS

Saturday 16th September



FUN SHOWING CHAMPIONSHIPS
Kindly sponsored by Welsh Pony Plaques

**HELEN'S WELSH
PONY PLAQUES**

SEE **SHOWING INFORMATION PAGE** for details on showing rules & restrictions, class start times, competition and warm up arenas, additional classes, supreme championships and presentations.

Competitor Turnout: Specialist showing attire is not required, but turnout should be clean, tidy and showing style. **Spurs are not permitted.**

Horse/Pony Tack & Turnout: Any bridle is permitted. Martingales are permitted (but not encouraged), no boots/bandages. Natives and traditionals can be shown in natural state, other breeds and types should be plaited or hogged.

Additional Assistance: Competitors can be assisted or led in the ring. The turnout of assistants is included in the judging of competitors' overall presentation, so smart attire is advised.

Class Format & Judging: See each class description for judging and format details. **Entry Fee:** £26.00

Stallions & Youngstock: NOT permitted in Fun Showing Championship classes.

Class S8 Best Turned Out - In-Hand or Ridden

Small Tour Open to horses/ponies of any breed/type shown by novice competitors. Competitors will be seen only at halt and walk, no individual show is required. To be judged on turnout and presentation with consideration for the age/ability of the person presenting/preparing the horse/pony. Turnout does not have to be strictly 'traditional', i.e. coloured additions, ribbons, glitter etc are welcomed if desired by the rider/handler, but kindly note this isn't judged on 'Best Bling Pony'! Additional marks can be awarded for presence, appeal and suitability. Blemishes will not affect judging. Rosettes awarded to all competitors.

Class S9 Lead Rein Equitation

Small Tour Open to horses/ponies of any breed/type. Rider any age, but must be of a standard that requires lead rein assistance. Class will be seen at walk and trot, and perform a set pattern show, as specified by the judge. Judging will be on riding skills and efforts, and horse/pony performance and presentation. Blemishes will not affect judging. Additional marks can be awarded for presence and suitability. Rosettes awarded to all competitors.

Class S10 Best In-Hand Horse & Pony

Small Tour Open to horses/ponies of any breed/type shown by novice competitors. Class will be seen at halt, walk and trot. Judging can be influenced by presentation, manners, suitability, presence and appeal, handler skills and application. Blemishes will not affect judging. Rosettes awarded to all competitors.

Class S11 Best Ridden Horse & Pony

Small Tour Open to horses/ponies of any breed/type shown by novice competitors. Class will be seen at walk and trot, and perform a set pattern individual show, as specified by the judge. Canter is not required but can be included in the individual show. Judging can be influenced by performance, presentation, manners, suitability, presence and appeal, riding skills and application. Blemishes will not affect judging. Rosettes awarded to all competitors.

Fun Showing Supreme Championship

1st & 2nd placed exhibits from classes S8 - S11 compete for the Fun Showing Supreme Championship.

HELEN'S WELSH PONY PLAQUES

**Handmade & painted
bespoke name plaques**

**Copied to resemble your horse,
personalised to individual requests.
Ideal for a unique gift.**

**Find us on Facebook  or see us at
the Sunshine Tour Championships.**



SHOW SPECIAL OFFERS! Find us in Competitors Row.



Saturday 16th September 2023 continued

VERSATILE SHOWING CHAMPIONSHIPS

Kindly sponsored by TJS Saddlery

TJS
Saddlery
www.tjs-saddlery.com

SEE SHOWING INFORMATION PAGE for details on showing rules & restrictions, class start times, competition and warm up arenas, additional classes, supreme championships and presentations.

Competitor Turnout: Specialist showing attire is not required, but turnout should be clean, tidy and appropriate for the activity.

Horse/Pony Tack & Turnout: Any bridle is permitted, martingales are permitted. Natives and traditionals can be shown in natural state, other breeds and types should be plaited or hogged.

Additional Assistance: Competitors **cannot** be assisted or led in Pony Club Pony or Riding Club Horse, but **can** be in Family Horse/Pony. The turnout of assistants is included in the judging of competitors' overall presentation, so smart attire is advised.

Class Format & Judging: See each class description for judging and format details. **Entry Fee:** £28.00

Stallions: NOT permitted in S12 Family Horse & Pony Championship class. Permitted in Versatile Horse & Pony classes S13 & S14: To be shown by suitably experienced rider, wearing appropriate bridle and clearly display tail ribbons.

Class S12 Sunshine Tour Family Horse and Family Pony Championship

Small Tour Open to horses/ponies of any height / breed / type. Rider and other participants any age.
Class will be seen at walk, trot and canter with the 'primary' rider and then each competitor will have up to 3 minutes to give a freestyle show to demonstrate suitability for different riders/family. Individual show can include other family/participants and props, but you do not have to demonstrate trot or canter with a second rider. Individual shows must be deemed safe for both the demonstrating competitor and others nearby, any person on the horse/pony (sitting or standing!) must wear protective headgear and those riding with stirrups must wear correct footwear. Be aware that on windy days, the use of props affected by wind will not be permitted. All decisions on safety & suitability of your individual show is entirely at the judge's discretion - be creative and have lots of fun but be safe! Individual shows that exceed time permitted may be asked to cut short their demonstration.
Judging will be on manners, way of going, versatility, suitability for all round activities, condition (must be sound) and presentation. Blemishes will not affect judging.

Class S13 Sunshine Tour Pony Club Pony & Versatile Pony Championship

Small Tour Open to ponies 148cm & under, any breed/type. Rider any age.
Class will be seen at walk, trot and canter and each rider will have up to 2 minutes to give a freestyle show which must include a jump. Judging will be on manners, way of going, versatility, suitability for all round activities, condition and presentation. Blemishes will not affect judging.

Class S14 Sunshine Tour Riding Club Horse & Versatile Horse Championship

Small Tour Open to horses exceeding 148cm, any breed/type. Rider any age.
Class will be seen at walk, trot and canter and each rider will have up to 2 minutes to give a freestyle show which must include a jump. Judging will be on manners, way of going, versatility, suitability for all round activities, condition and presentation. Blemishes will not affect judging.

Sunshine Tour Versatile Supreme Championship

1st & 2nd placed exhibits from classes S12 - S14 compete for the Versatile Supreme Championship.

*Everyday essentials
for both horse and
rider, visit our
trade stand at*

*Sunshine Tour Championship for
quality products at affordable prices*

TJS
Saddlery
www.tjs-saddlery.com



TOP TURNOUT CHAMPIONSHIP

Competitor Turnout: Showing attire should be traditional and correct for showing.

Horse/Pony Tack & Turnout: Any bridle is permitted, no martingales or boots/bandages. Natives and traditionals can be shown in natural state, other breeds and types should be plaited or hogged.

Additional Assistance: Competitors are required to be independent except for lead rein classes or special needs (request dispensation with entry).

Class Format & Judging: Class will be seen at halt and walk and inspected by the judge, trot up at judge's discretion. No individual show required.

Entry Fee: £28.00

Stallions & Youngstock: To be shown by suitably experienced handler/rider, wearing appropriate bridle/halter and clearly display tail ribbons.

Class S15 Top Turnout Championship - In-Hand

Grand Tour Open to horses/ponies any height/type. To be judged on condition & turnout of horse / tack / handler, presentation and manners.

Class S16 Top Turnout Championship - Ridden

Grand Tour Open to horses/ponies any height/type. To be judged on condition & turnout of horse / tack / rider, presentation and manners.

Class S17 Top Turnout Championship - Lead Rein

Grand Tour Open to horses/ponies any height/type. To be judged on condition & turnout of horse / tack / rider and leader presentation and manners. Snaffle bridles only, lead rein must be attached to noseband, no additional attached reins are permitted. Lead Rein riders must be 3 years of age or over and are not allowed to take part in other showing championships except: Lead Rein Show Pony, First Ridden Pony, Fun Showing, Starters Showing, Junior Handler, Nursery Stakes Working Hunter Pony and Family Horse/Pony. Show jumping championship participation is restricted to Mini Tour and Dressage to Intro, Starters or Have-A-Go.

Sunshine Tour Top Turnout Supreme Championship

1st & 2nd placed exhibits from classes S15 - S17 compete for the Top Turnout Supreme Championship.



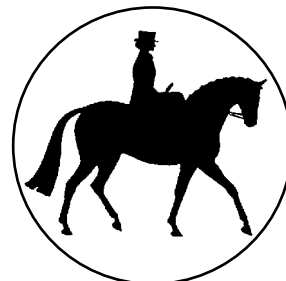
Sunshine Tour Showing Showcase

Kindly provided by Amanda Birch and Area 8 Side Saddle Association

Side Saddle Association Demonstration

Area 8 of the Side Saddle Association are delighted to be sharing the beautiful art of elegant side saddle riding. Members will be riding, showing the diverse range of horses and ponies that take part in this wonderful style of riding. Come along and watch the demonstration and perhaps find out about side saddle training available in your area.

And watch the elegant side saddle riders in action again on Sunday in Ring 5A for the Sunshine Tour Side Saddle Championships!



Showing to Music



The ideal way to display the true harmony between horse and rider! The demo will show you the joy of riding accompanied by a piece of music that really suits the paces of the horse and the personality of the rider.

Showing to Music is an opportunity to smile and show off your individual style and 'knock the socks off' the judge 😊

There's also a Showing to Music training class on Friday, an ideal opportunity to have a go yourself!

Showing Showcase Demo takes place in Ring 5A at approx. 11am on Saturday



LEAD REIN CHAMPIONSHIP

Kindly sponsored by Lafond Browbands

SEE SHOWING INFORMATION PAGE for details on showing rules & restrictions, class start times, competition and warm up arenas, additional classes, supreme championships and presentations.

Competitor Turnout: Showing attire should be traditional and correct for showing. **Spurs are not permitted.**

Lead Rein Riders must be 3 years of age or over and are not allowed to take part in other showing championships except: Lead Rein Show Pony, First Ridden Pony, Fun Showing, Starters Showing, Junior Handler, Nursery Stakes Working Hunter Pony and Family Horse/Pony. Show jumping championship participation is restricted to Mini Tour and Dressage to Intro, Starters or Have-A-Go.

Pony Tack & Turnout: Snaffle bridles only, reins must be of normal length and not knotted or attached to anything other than the bit. Lead rein must be attached to noseband, no additional attached reins are permitted except for handle on saddle for rider.

Additional Assistance: Competitors are required to be led. The turnout of assistants is included in the judging of competitors' overall presentation, so smart attire is advised.

Class Format & Judging: Judging influenced by conformation, manners, way of going, suitability for rider & presentation. Will not be required to canter or jump. Judge may specify set pattern for individual show. **Entry Fee:** £28.00

Stallions: NOT permitted in Lead Rein Championship classes.

Class S18 Novice & Newcomer Lead Rein Showing Championship

Small Tour Open to riders 10 years & under on 1st January 2023 and ponies 138cm & under of any breed/type. Novice & Newcomer Championships are open to qualified and un-qualified pony/rider combinations. This is a Small Tour class and pony/rider combination are expected to be novice or new to showing. Rosettes awarded to all.

Class S19 Lead Rein Show & Show Hunter Pony Showing Championship

Grand Tour Open to riders 10 years & under on 1st January 2023 and ponies 128cm & under of show pony type (plaited). Class may be split into 2 age groups if sufficient entries. Rosettes awarded to all competitors.

Class S20 Lead Rein Mountain & Moorland Showing Championship

Grand Tour Open to riders 10 years & under on 1st January 2023 and ponies 128cm & under of any M&M breed. Class may be split into 2 age groups if sufficient entries. Rosettes awarded to all competitors.

Sunshine Tour Lead Rein Supreme Championship

1st & 2nd placed exhibits from classes S18 - S20 compete for the Lead Rein Supreme Championship.



FIRST RIDDEN CHAMPIONSHIP

Kindly sponsored by Lafond Browbands

SEE SHOWING INFORMATION PAGE for details on showing rules & restrictions, class start times, competition and warm up arenas, additional classes, supreme championships and presentations.

Competitor Turnout: Showing attire should be traditional and correct for showing. **Spurs are not permitted.**

First Ridden Riders First Ridden riders are not allowed to take part in Ridden Pony championship class S53 - S56.

Pony Tack & Turnout: Snaffle bridles only, reins must be of normal length and not knotted or attached to anything other than the bit. No martingales or additional attached reins are permitted.

Additional Assistance: Competitors are required to be independent except for special needs (request dispensation with entry).

Class Format & Judging: Judging influenced by conformation, manners, way of going, suitability for rider, condition & presentation. Class will include all ponies being seen at walk & trot in a group and each rider will give an individual show as advised by the judge, which will include canter. Judge may specify set pattern for individual show.

Stallions: NOT permitted in First Ridden Championship classes.

Class S21 Novice & Newcomer First Ridden Showing Championship

Small Tour Open to riders 12 years & under on 1st January 2023 and ponies 138cm & under of any breed/type. Novice & Newcomer Championships are open to qualified and un-qualified pony/rider combinations. This is a Small Tour class and pony/rider combination are expected to be novice or new to showing. Rosettes awarded to all.

Class S22 First Ridden Show & Show Hunter Pony Championship

Grand Tour Open to riders 12 years & under on 1st January 2023 and ponies 128cm & under of show pony type (plaited). Rosettes awarded to all competitors.

Class S23 First Ridden Mountain & Moorland Championship

Grand Tour Open to riders 12 years & under on 1st January 2023 and ponies 128cm & under of any M&M breed. Rosettes awarded to all competitors.

Sunshine Tour First Ridden Supreme Championship

1st & 2nd placed exhibits from classes S21 - S23 compete for the First Ridden Supreme Championship.



VETERAN CHAMPIONSHIP

Kindly sponsored by Veteran Horse Society and Allen & page

SEE SHOWING INFORMATION PAGE for details on showing rules & restrictions, class start times, competition and warm up arenas, additional classes, supreme championships and presentations.

Competitor Turnout: Showing attire should be traditional and correct for showing. **Spurs are not permitted.**

Horse/Pony Tack & Turnout: Any bridle is permitted, no martingales or boots/bandages. Natives and traditionals can be shown in natural state, other breeds and types should be plaited or hogged. **Bridle disc showing current age of horse/pony must be displayed on right side of bridle and competitor number on left side of bridle or armband.**

Additional Assistance: Competitors are required to be independent except for lead rein rider and special needs (request dispensation with entry).

Class Format & Judging: Judging influenced by freedom of paces, suppleness for age, manners, condition & turnout. Ridden classes will include group walk, trot and canter (lead rein riders not required to show canter). Each rider will have up to 2 minutes to give a freestyle show.

Entry Fee: £28.00

Stallions: To be shown by suitably experienced handler/rider, wearing appropriate bridle/halter and clearly display tail ribbons.

NEW! VHS Golden Ticket direct qualification to the VHS Championships will be awarded to the Veteran Supreme Champion and Reserve Supreme Champion. VHS Championships to be held at Arena UK on 29th September - 1st October 2023.

Class S24	Young Veteran Horse/Pony Championship - In-Hand
Grand Tour	Open to horses/ponies 15-19 years on 1 st January 2023 of any breed/type.
Class S25	Mature Veteran Horse/Pony Championship - In-Hand
Grand Tour	Open to horses/ponies 20 years and over on 1 st January 2023 of any breed/type.
Class S26	Young Veteran Horse/Pony Championship - Ridden
Grand Tour	Open to horses/ponies 15-19 years on 1 st January 2023 of any breed/type.
Class S27	Mature Veteran Horse/Pony Championship - Ridden
Grand Tour	Open to horses/ponies 20 years and over on 1 st January 2023 of any breed/type.

Sunshine Tour Veteran Supreme Championship

1st & 2nd placed exhibits from classes S24 - S27 compete for the Veteran Supreme Championship.



Sunshine Tour Supreme Veteran Championship

Veteran Horse Society (VHS) Golden Ticket

The VHS offers the Veteran Supreme Champion and Veteran Reserve Supreme Champion a Golden Ticket to attend the Supreme Veteran Horse of the Year Final, held at Arena UK, Lincs. 29th September – 1st October 2023.

Qualifying rules apply, turnout rules in accordance with the 2023 Rule Book and National Championship Rules.

To enter the VHS Supreme Final you will need to enter within 7 days from qualification and become a member of the Veteran Horse Society.

Full information is available on their website or by contacting the VHS directly.

www.veteran-horse-society.co.uk email: info@veteran-horse-society.co.uk

Telephone: 01239 881300 / 07789 514004

Kindly sponsored by Allen & Page



Need help with your horse's show preparation? We offer a professional in-house grooming service to help you with plaiting, quarter marking and getting your horse show ring ready. Booking prior to the show is advised. Email info@sunshinetour.co.uk for details.



Saturday 16th September 2023 continued ...

WORKING HUNTER PONY CHAMPIONSHIP

Kindly sponsored by Boys Ride Too

SEE SHOWING INFORMATION PAGE for details on showing rules & restrictions, class start times, competition and warm up arenas, additional classes, supreme championships and presentations.

Competitor Turnout: Showing attire should be traditional and correct for showing. **Spurs are not permitted.** Grooms assisting during a class e.g. for strip & trot up sections, **MUST** wear a hat (not necessarily protective) and suitable footwear.

Pony Tack & Turnout: Any suitable bridle is permitted and martingales are allowed, same tack must be worn for both sections. Boots/bandages allowed in jumping phase, but removed for showing phase.

Additional Assistance: Competitors are required to be independent except for special needs (request dispensation with entry).

Class Format & Judging: Class consists of a jumping phase of natural type obstacles, followed by a showing phase. Competitors eliminated in the jumping might not compete the showing phase. Ponies jump in their respective height section (drawn order), then proceed to showing section. Ponies judged: 50% jumping, 20% style & manners, 10% way of going, 20% type, action & conformation. **Entry Fee:** £28.00

Stallions: To be shown by suitably experienced rider, wearing appropriate bridle and clearly display tail ribbons.

Class S28 Nursery Stakes Working Hunter Pony Championship

Grand Tour Open to ponies not exceeding 138cm and riders 12 years & under on 1st January 2023. Jumps approx. 40-45cm.

Class S29 Novice & Newcomer Working Hunter Pony Championship

Small Tour Open to ponies not exceeding 148cm, of any breed. Rider any age. Pony/rider combination not to have won 4 or more working hunter pony classes in the current year. Novice & Newcomer Championships are open to qualified and un-qualified pony/rider combinations. This is a Small Tour class and combinations are expected to be novice or new to showing. Jumps approx. 50cm.

Class S30 Mountain & Moorland Working Hunter Pony Championship

A&B Open to purebred Mountain & Moorland ponies. Rider any age. A: Ponies not exceeding 138cm; jumps approx. 60cm: B: Ponies exceeding 138cm; jumps approx. 65cm.

Class S31 Working Hunter Pony Championship

A&B Open to ponies not exceeding 148cm of show type (plaited). Rider any age. A: Ponies not exceeding 138cm; jumps approx. 65cm. B: Ponies exceeding 138cm, but not exceeding 148cm; jumps approx. 75cm.

Sunshine Tour Working Hunter Pony Supreme Championship

1st & 2nd placed exhibits from classes S28 - S31 compete for the Working Hunter Pony Supreme Championship.

BoysRideToo

The horse & pony magazine for boys

- bi monthly with over 50 pages per issue
- aimed at ALL boys with an interest in horses
- learn about many different horse sports and activities, equine careers, pony care, riding tips, places to visit and much more
- regular competitions and giveaways
- lots of opportunities to get involved
- NEW WEBSITE with extra content launching soon



IN PRINT:
boysridetoomagazine.com



DIGITAL:
pocketmags.com/boys-ride-too-magazine

FOLLOW US:





Saturday 16th September 2023 continued

WORKING HUNTER CHAMPIONSHIP

Kindly sponsored by Harry Hall

SEE SHOWING INFORMATION PAGE for details on showing rules & restrictions, class start times, competition and warm up arenas, additional classes, supreme championships and presentations.

Competitor Turnout: Showing attire should be traditional and correct for showing. Grooms assisting during a class e.g. for strip & trot up sections, MUST wear a hat (not necessarily protective) and suitable footwear.

Horse Tack & Turnout: Any suitable bridle is permitted and martingales are allowed, same tack must be worn for both sections. Boots/bandages allowed in jumping phase, but removed for showing phase.

Additional Assistance: Competitors are required to be independent except for special needs (request dispensation with entry).

Class Format & Judging: Class consists of a jumping phase of natural type obstacles, followed by a showing phase. Competitors eliminated in the jumping will not compete the showing phase. Horses jump in drawn order, then all sections return to the ring together for show judging. Horses judged: 40% jumping, 20% style & manners, 20% ride and way of going, 20% type, action & conformation. **Entry Fee: £28.00**

Stallions: To be shown by suitably experienced rider, wearing appropriate bridle and clearly display tail ribbons.

Class S32 Novice & Newcomer Working Hunter Championship

Small Tour Open to horses exceeding 148cm, of hunter type. Rider any age. Horse/rider combination not to have won 4 or more working hunter classes in the current year. Novice & Newcomer Championships are open to qualified and un-qualified horse/rider combinations. This is a Small Tour class and Horse/rider combinations are expected to be novice or new to showing. Jumps approx. 75cm.

Class S33 Working Hunter & Working Show Horse Championship

A&B Open to hunters, hunter types and show horses exceeding 148cm and cobs not exceeding 155cm and maxi cobs exceeding. Rider any age. A: Working Show Horse - Jumps approx. 75cm. Eligible types: Riding Horse, Hack, Cobs, Coloureds. B: Hunters - jumps approx. 85cm.

Sunshine Tour Working Hunter Supreme Championship

1st & 2nd placed exhibits from classes S32 - S33 compete for the Working Hunter Supreme Championship.

The Sunshine Tour Working Hunter Championships 2023

Generously sponsored by the Harry Hall One Club, making horse ownership more affordable with Insurance, Membership and Shopping.



HARRY HALL

EST.1891

harryhall.com



Saturday Super Supreme Showing Championship

1st and 2nd placed exhibits from Saturday's supreme showing championships are eligible to compete in the **Sunshine Tour Super Supreme Showing Championship**, held at the end of the day. **Sponsored by Team Holder Showing.**

Sincere thanks to Gayle Holder for supporting and sponsoring the Super Supreme Championships at the Sunshine Tour



- ✓ Time saving & simple
- ✓ Eco friendly & plastic free
- ✓ Budget conscious & convenient

bring out the champion!
inside!



Sunshine Tour Exclusive offers for all competitors and spectators.
Visit our stand at Pavilion Parade to learn more!



Once you Pac
you won't look back!



Choose your
horses
supplements



Pre portioned
into daily
serving Pacs



Easy to use
subscription
service

0759- 595 - 4247 | info@equipacs.co.uk | www.EquiPacs.co.uk





SHOWING CHAMPIONSHIPS

Sunday 17th September



STARTERS SHOWING CHAMPIONSHIP

Kindly sponsored by Redpost Equestrian

SEE SHOWING INFORMATION PAGE for details on showing rules & restrictions, class start times, competition and warm up arenas, additional classes, supreme championships and presentations.

Competitor Turnout: Specialist showing attire is not required, but turnout should be clean, tidy and showing style. **Spurs are not permitted.**

Horse/Pony Tack & Turnout: Any bridle is permitted, no martingales or boots/bandages. Natives and traditionals can be shown in natural state, other breeds and types should be plaited or hogged.

Additional Assistance: Competitors can be assisted or led in the ring. The turnout of assistants is included in the judging of competitors' overall presentation, so smart attire is advised.

Class Format: See each class description for judging and format details. **Entry Fee:** £26.00

Stallions & Youngstock: NOT permitted in Starters Showing Championship classes.

Starters Championship is open to qualified and un-qualified horse/pony & competitor combinations.

Class S34 Small Tour	Starters Best Turned Out Championship: In-Hand or Ridden Open to young, novice and new-to-showing combination of rider/handler and horse/pony of any height/type. To be judged on turnout of horse / tack / handler, presentation and manners. Blemishes will not affect judging. Rosettes awarded to all competitors.
Class S35 Small Tour	Starters Showing In-Hand Championship Open to young, novice and new-to-showing combination of rider/handler and horse/pony of any height/type. Class will include each horse being inspected at halt, walk and trot. Judging will be on conformation, action, manners, condition and presentation. Additional marks can be awarded for handler skills, horse/pony presence and suitability. Blemishes will not affect judging.
Class S36 Small Tour	Starters Showing Ridden Championship Open to young, novice and new-to-showing combination of rider/handler and horse/pony of any height/type. Class seen at walk and trot, no canter is required. Individual show is a set pattern, at the judge's discretion. Example individual pattern shown below. Judged on way of going, manners, presentation and individual show. Additional marks can be awarded for riding, presence and suitability. Blemishes will not affect judging.

Equitation Supreme Championship

1st & 2nd placed exhibits from classes S34 - S36 compete for the Equitation Supreme Championship.



Starters Showing 2023
Generously supported by

REDPOST

EQUESTRIAN, PET & COUNTRY LIVING

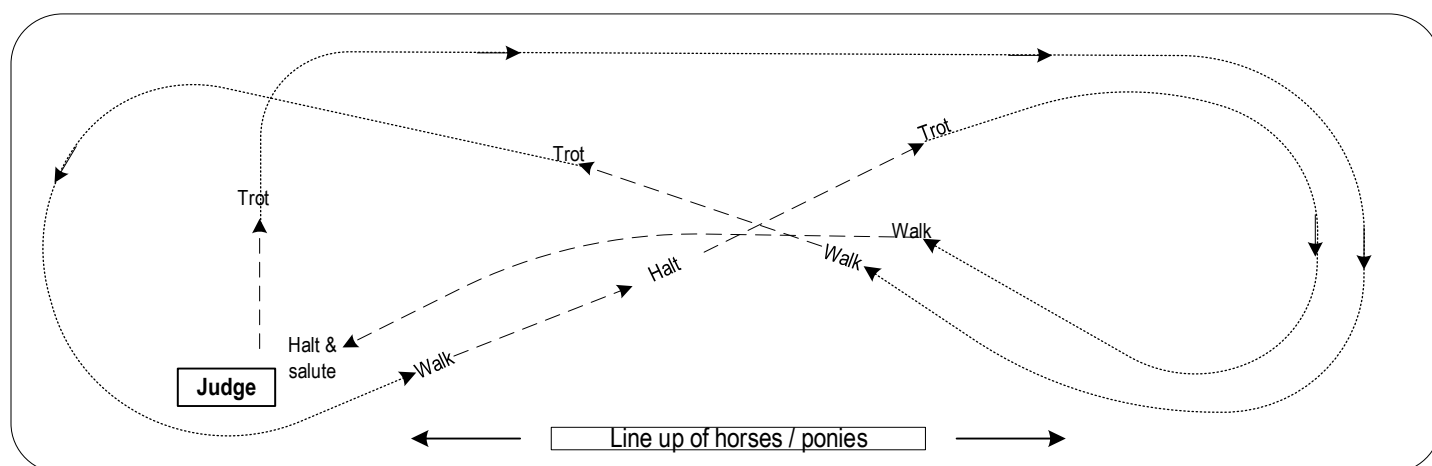
WWW.REDPOSTEQUESTRIAN.CO.UK

EXAMPLE INDIVIDUAL SHOW PATTERN class S36 Starters Ridden Showing:

1. Walk out of line-up and present yourself to the judge.
2. Walk away and commence trot, tracking right.
3. Trot along length of showing area, then commence figure of eight.
4. Across first change of rein, transition to walk and show some walk steps. Recommence trot.
5. Across second change of rein, transition to halt. Recommence trot and finish figure of eight.
6. Return to judge at walk and present to judge at halt with salute.

Set Pattern for Starters Showing Classes

--- Walk Trot





EQUITATION CHAMPIONSHIP

Kindly sponsored by Bloomfields Horseboxes

SEE SHOWING INFORMATION PAGE for details on showing rules & restrictions, class start times, competition and warm up arenas, additional classes, supreme championships and presentations.

Competitor Turnout: Specialist showing attire is not required, but turnout should be clean, tidy and showing style. Junior handler competitors MUST wear protective headwear.

Horse/Pony Tack & Turnout: Any bridle is permitted, no martingales or boots/bandages. Natives and traditionals can be shown in natural state, other breeds and types should be plaited or hogged.

Class Format: Ridden Class will include group walk and trot, each rider will have up to 2 minutes to give a freestyle show which must include canter. Judging will be on riding skills and application. **Junior handler** will be seen at halt, walk and trot with a set pattern as specified by the judge. Judging will be on handler skills and application. **Entry Fee:** £28.00

Additional Assistance: Competitors are required to be independent except for special needs (request dispensation with entry).

Stallions & Youngstock: NOT permitted in S37, S38 Junior Handler or S40 Junior Best Rider. Stallions are permitted in S39: To be shown by suitably experienced rider, wearing appropriate bridle and clearly display tail ribbons.

Class S37 Junior Handler Championship - Handler 8 years & under

Small Tour Open to handlers 8 years or under on 1st January 2023 and horses/ponies of any height/type. Blemishes/conformation will not affect judging. No stallions or youngstock permitted. Handlers must wear protective headgear.

Class S38 Junior Handler Championship - Handler 9-12 years old

Small Tour Open to handlers 9-12 years old on 1st January 2023 and horses/ponies of any height/type. Blemishes/conformation will not affect judging. No stallions or youngstock permitted. Handlers must wear protective headgear.

Class S39 Best Rider Championship - Rider 13 years & over

Small Tour Open to riders 13 years and over on 1st January 2023 and horses/ponies of any height/type. Blemishes/conformation will not affect judging.

Class S40 Junior Best Rider Championship - Rider 12 years & under

Small Tour Open to riders 12 years and under on 1st January 2023 and horses/ponies of any height/type. Blemishes/conformation will not affect judging. No stallions permitted.

Equitation Supreme Championship

1st & 2nd placed exhibits from classes S37 - S40 compete for the Equitation Supreme Championship.



BLOOMFIELDS HORSEBOXES

Leading our industry through Innovation not Imitation

+ 44 (0) 1623 869779

info@bloomfields.co | www.bloomfields.co

Sussex Equine Massage Therapy will be at Sunshine Tour 2023 to help your horse be at their best for competition.

Give your horse the edge with a pre-competition massage, a great way to prepare your horse to compete at their optimal best. Or help recovery afterwards with a well deserved post-event massage, helping to reduce injury and soreness. Contact Denise to pre book your 30 min slot at the discounted price of £30.00 (£35.00 on the day).

Mobile 0788 4308329 or www.sussexequinemassagetherapy.co.uk





REHABILITATED RESCUE HORSE & PONY CHAMPIONSHIP

Kindly sponsored by Mayes & Scrine Equine Vets

SEE SHOWING INFORMATION PAGE for details on showing rules & restrictions, class start times, competition and warm up arenas, additional classes, supreme championships and presentations.

Competitor Turnout: Specialist showing attire is not required, but turnout should be clean, tidy and showing style.

Horse/Pony Tack & Turnout: Any bridle is permitted, no martingales or boots/bandages. Natives and traditionals can be shown in natural state, other breeds and types should be plaited or hogged.

Rescued Championship

Open to horses and ponies that have been removed from situations threatening to their life or serious threat to immediate health, including neglect, abuse, abandonment, sale for meat and possible euthanasia. Horse/pony can have been directly rescued by current owner/guardian or acquired from a rescue centre.

There is no time limit from the original rescue situation and presenting in this class, however there are **2 STRICT RULES:**

1. Horses and ponies must be presented in good condition, sound and healthy, so sufficient time since rescue to restore good health must have been given.
2. Horses and ponies exhibiting behavioural difficulties may not be allowed to participate if the safety of others is in jeopardy or the judge feels that the horse/pony itself is not going to benefit from remaining in the class.

Class Format: Class will be seen at walk & trot and inspected by the judge. Ridden exhibits may be asked to give an individual show. Judging will be on turnout, presentation and condition with consideration for the age and history of the horse/pony and additional marks can be awarded for presence and appeal. **Entry Fee:** £26.00

Additional Assistance: Competitors can be assisted or led in the ring. The turnout of assistants is included in the judging of competitors' overall presentation, so smart attire is advised.

Stallions & Youngstock: To be shown by suitably experienced handler/rider, wearing appropriate bridle / halter and clearly display tail ribbons.

Rehabilitated Rescued Championship is open to qualified and un-qualified horse/pony & competitor combinations.

Class S41 Rehabilitated Rescued - In-Hand & Ridden

Grand Tour Open to rescued horses and ponies, any breed/type and age (minimum 2 years old in-hand, 4 years old ridden). Blemishes/conformation will not be penalised. Rosettes awarded to all.



MAYES & SCRINE

EQUINE VETERINARY PRACTICE






6 Vet General Equine Practice

Comprehensive mobile 24hr equine veterinary services

Portable diagnostic and treatment equipment

Routine and advanced dentistry

Fully equipped operating theatre and surgeon

Digital Xray • Ultrasound • Videoendoscopy

Gastroscopy • Shockwave therapy

Office hours 8am-5pm Monday to Friday

Clinical directors:

Ben Mayes MA VetMB MRCVS, Judy Scrine MA VetMB MRCVS



Tel: 01306 628222 Fax: 01306 628379

office@msvets.co.uk

www.mayesandscrine.co.uk



IN-HAND SHOW PONY CHAMPIONSHIP

THE NATIONAL PONY SOCIETY

Kindly sponsored by The National Pony Society

SEE SHOWING INFORMATION PAGE for details on showing rules & restrictions, class start times, competition and warm up arenas, additional classes, supreme championships and presentations.

Competitor Turnout: Showing attire should be traditional and correct for showing.

Pony Tack & Turnout: Appropriate bridle with lead rein or halter can be worn. Natives and traditionals can be shown in natural state, other breeds and types should be plaited or hogged.

Class Format: Classes will be seen at halt, walk & trot and inspected by the judge. Judged on conformation, action, type, manners, condition and presentation. **Entry Fee:** £28.00

Additional Assistance: Competitors are required to be independent except for special needs (request dispensation with entry).

Stallions & Youngstock: To be shown by suitably experienced handler, wearing appropriate bridle / halter and clearly display tail ribbons.

Class S42 Youngstock Championship - In-Hand

Grand Tour Open to any breed / type of horse / pony 1 - 3 years old on 1st January 2023. At the time of the championship the horse/pony must not be more than 3 years old. Class may be split into age groups if sufficient entries.

Class S43 Coloured Pony Championship - In-Hand

Grand Tour Open to piebald, skewbald, dun, roan, spotted, palomino and odd-coloured ponies 148cm & under, of any breed/type.

Class S44 Show Pony & Show Hunter Pony Championship - In-Hand

Grand Tour Open to show ponies 148cm & under and show hunter ponies 153cm & under.

Class S45 Mountain & Moorland Small Breeds Championship - In-Hand

Grand Tour Open to pure breed small Mountain & Moorlands (Shetland, Welsh A, Welsh B, Exmoor, Dartmoor).

Class S46 Mountain & Moorland Large Breeds Championship - In-Hand

Grand Tour Open to pure breed large Mountain & Moorlands (Connemara, Highland, Fell, Dales, Welsh C, Welsh D, New Forest).

Sunshine Tour In-Hand Show Pony Supreme Championship

1st & 2nd placed exhibits from classes S42 - S46 compete for the In-Hand Show Horse Supreme Championship.

IN-HAND SHOW HORSE CHAMPIONSHIP

Kindly sponsored by Farm & Stable Supplies



SEE SHOWING INFORMATION PAGE for details on showing rules & restrictions, class start times, competition and warm up arenas, additional classes, supreme championships and presentations.

Competitor Turnout: Showing attire should be traditional and correct for showing.

Horse Tack & Turnout: Appropriate bridle with lead rein or halter can be worn. Natives and traditionals can be shown in natural state, other breeds and types should be plaited or hogged.

Class Format: Classes will be seen at halt, walk & trot and inspected by the judge. Judged on conformation, action, type, manners, condition and presentation. **Entry Fee:** £28.00

Additional Assistance: Competitors are required to be independent except for special needs (request dispensation with entry).

Stallions & Youngstock: To be shown by suitably experienced handler, wearing appropriate bridle / halter and clearly display tail ribbons.

Class S47 Riding Horse & Hack Championship - In-Hand

Grand Tour Open to riding horses exceeding 148cm and hacks exceeding 148cm but not exceeding 160cm.

Class S48 Thoroughbred Championship - In-Hand

Grand Tour Open to thoroughbreds exceeding 148cm. Need not have raced.

Class S49 Foreign Breed Championship - In-Hand

Grand Tour Open to foreign breeds any height/type. Turnout can be traditional for breed or English

Class S50 Hunter Championship - In-Hand

Grand Tour Open to all weight categories of hunter exceeding 148cm.

Class S51 Coloured Horse Championship - In-Hand

Grand Tour Open to piebald, skewbald, dun, roan, spotted, palomino and odd-coloured horses exceeding 148cm.

Class S52 Show & Traditional Cob Championship - In-Hand

Grand Tour Open to show cobs not exceeding 155cm and maxi cobs exceeding 155cm, and traditional cobs any height.

Sunshine Tour In-Hand Show Horse Supreme Championship

1st & 2nd placed exhibits from classes S47 - S52 compete for the In-Hand Show Horse Supreme Championship.



Sunday 17th September 2023 continued ...



THE NATIONAL PONY SOCIETY

RIDDEN SHOW PONY CHAMPIONSHIP

Kindly sponsored by The National Pony Society

SEE SHOWING INFORMATION PAGE for details on showing rules & restrictions, class start times, competition and warm up arenas, additional classes, supreme championships and presentations.

Competitor Turnout: Showing attire should be traditional and correct for showing. Grooms assisting during a class e.g. for strip & trot up sections, **MUST** wear a hat (not necessarily protective) and suitable footwear.

Pony Tack & Turnout: Any suitable bridle, no martingales or boots/bandages. Natives and traditionals can be shown in natural state, other breeds and types should be plaited or hogged.

Class Format: Class will show group walk, trot and canter and each rider will have up to 2 minutes to give a freestyle show, including gallop. Judging will be on paces, conformation, action, manners, way of going, presentation and condition. **Entry Fee:** £28.00

Additional Assistance: Competitors are required to be independent except for special needs (request dispensation with entry).

Stallions: To be shown by suitably experienced rider, wearing appropriate bridle and clearly display tail ribbons.

Class S53 Coloured Pony Championship - Ridden

Grand Tour Open to piebald, skewbald, dun, roan, spotted, palomino and odd-coloured ponies 148cm & under. Rider any age.

Class S54 Show Pony & Show Hunter Pony Championship - Ridden

Grand Tour Open to show ponies 148cm & under and show hunter type 153cm & under. Rider any age.

Class S55 Mountain & Moorland Small Breeds Championship - Ridden

Grand Tour Open to pure breed small Mountain & Moorlands (Shetland, Welsh A, Welsh B, Exmoor, Dartmoor). Rider any age.

Class S56 Mountain & Moorland Large Breeds Championship - Ridden

Grand Tour Open to pure breed large Mountain & Moorlands (Connemara, Dales, Fell, Highland, New Forest, Welsh Section C and D). Rider any age.

Sunshine Tour Ridden Show Pony Supreme Championship

1st & 2nd placed exhibits from classes S53 - S56 compete for the Ridden Show Pony Supreme Championship.

RIDDEN SHOW HORSE CHAMPIONSHIP

Kindly sponsored by Farm & Stable Supplies



Competitor Turnout: Showing attire should be traditional and correct for showing. Grooms assisting during a class e.g. for strip & trot up sections, **MUST** wear a hat (not necessarily protective) and suitable footwear.

Horse Tack & Turnout: Any suitable bridle, no martingales or boots/bandages. Natives and traditionals can be shown in natural state, other breeds and types should be plaited or hogged.

Class Format: Class will show group walk, trot and canter and each rider will have up to 2 minutes to give a freestyle show, including gallop (hacks not required to gallop). Judge will ride and will include trot up & strip section. Judging will be on paces, conformation, action, manners, way of going, presentation and condition. **Entry Fee:** £28.00

Additional Assistance: Competitors are required to be independent except for special needs (request dispensation with entry).

Stallions: To be shown by suitably experienced rider, wearing appropriate bridle and clearly display tail ribbons.

Class S57 Riding Horse & Hack Championship - Ridden

Grand Tour Open to riding horses exceeding 148cm and hacks exceeding 148cm but not exceeding 160cm. Rider any age.

Class S58 Thoroughbred Championship - Ridden

Grand Tour Open to thoroughbreds exceeding 148cm. Rider any age.

Class S59 Foreign Breed Championship - Ridden

Grand Tour Open to foreign breed any height/type. Rider any age. Turnout can be traditional for breed or English. Traditional headgear is permitted.

Class S60 Hunter Championship - Ridden

Grand Tour Open to any weight category hunter exceeding 148cm. Rider any age.

Class S61 Coloured Horse Championship - Ridden

Grand Tour Open to piebald, skewbald, dun, roan, spotted, palomino and odd-coloured horses exceeding 148cm. Rider any age.

Class S62 Show Cob Championship - Ridden

Grand Tour Open to show cobs not exceeding 155cm and maxi cobs exceeding 155cm. Rider any age.

Class S63 Traditional Cob Championship - Ridden

Grand Tour Open to traditional cobs of any height. Rider any age.

Ridden Show Horse Supreme Championship

1st & 2nd placed exhibits from classes S57 - S63 compete for the Ridden Show Horse Supreme Championship.



Sunday 17th September 2023 continued ...

SIDE SADDLE CHAMPIONSHIP

Kindly sponsored by Area 8 Side Saddle Association

SEE SHOWING INFORMATION PAGE for details on showing rules & restrictions, class start times, competition and warm up arenas, additional classes, supreme championships and presentations.

Competitor Turnout: Riders to wear traditional side saddle habit and be turned out in accordance to Side Saddle Association rules, with a hat complying with current safety standards.

Horse Tack & Turnout: Any suitable bridle, no martingales or boots/bandages. Natives and traditionals can be shown in natural state, other breeds and types should be plaited or hogged.

Class Format: See each class description for details of class format. **Entry Fee:** £28.00

Additional Assistance: Competitors are required to be independent except for special needs (request dispensation with entry).

Stallions: To be shown by suitably experienced rider, wearing appropriate bridle and clearly display tail ribbons.

Class S64 Best Horse & Pony Ridden Side Saddle

Grand Tour Open to horses and ponies 5 years old & over, riders any age.
Class will show group walk, trot and canter and each rider will have up to 2 minutes to give a freestyle show, including walk, trot and canter on each rein. Conformation and manners will be taken into consideration. Turnout will be judged.

Class S65 Side Saddle Style & Performance

Grand Tour Open to horses and ponies 5 years old & over, riders any age.
Class will show group walk, trot and canter and each rider will have up to 2 minutes to give a freestyle show, including walk, trot and canter on each rein, plus a three loop serpentine in trot and lengthened canter. The overall picture, manners and way of going and turnout will be judged.

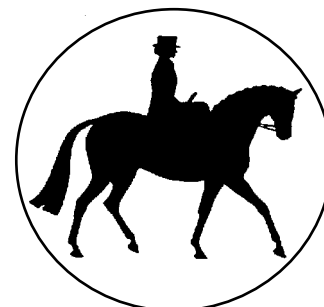
Side Saddle Supreme Championship

1st & 2nd placed exhibits from classes S64 & S65 compete for the Ridden Side Saddle Supreme Championship.

The Sunshine Tour Side Saddle Championships 2023

Kindly sponsored by Area 8 Side Saddle Association

The Side Saddle Association are delighted to be sharing the beautiful art of elegant side saddle riding. Area 8 are very active, supporting members with events such as rallies, clinics, training shows and tuition in both side saddle riding and turnout. We have specialist instructors all over the South East.



If you would like to know more, please do not hesitate to speak to Angela (at the Sunshine Tour show) or look us up on our website or Facebook page to find out how you too can become involved in side saddle and who knows, you may be helping us share this beautiful art to others in the future.

www.sidesaddlearea8.co.uk

www.sidesaddleassociation.co.uk



Sunday Super Supreme Showing Championship

1st and 2nd placed exhibits from Sunday's supreme showing championships are eligible to compete in the **Sunshine Tour Super Supreme Showing Championship**, held at the end of the day. **Sponsored by Team Holder Showing.**

Sincere thanks to Gayle Holder for supporting and sponsoring the Super Supreme Championships at the Sunshine Tour



FEED THE DIFFERENCE

No Oats, No Wheat,
No Barley, No Alfalfa,
No Worries

Contains BMC®
& PRO-YEAST
Digestive Buffer

Low in Sugar (6%),
Low in Starch (8%)

Complete Feed,
No Need for
Balancers

The Original
Cereal Free Feed

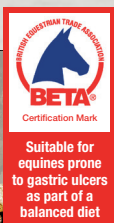
Ideal for Horses
& Ponies Prone to
Gastric Ulcers

Supports Optimal
Muscle Health
& Function

Topline,
Condition &
Saracen Shine



Blackcurrant Flavour



SUITABLE FOR HORSES & PONIES PRONE TO EQUINE GASTRIC ULCER SYNDROME



Research Driven
Formulation



Fully Fortified
Ensuring
Balanced Diet



Ulcer
Friendly



Kentucky
Equine Research
Nutrition Partner



Qualified
Nutrition Advice
Service

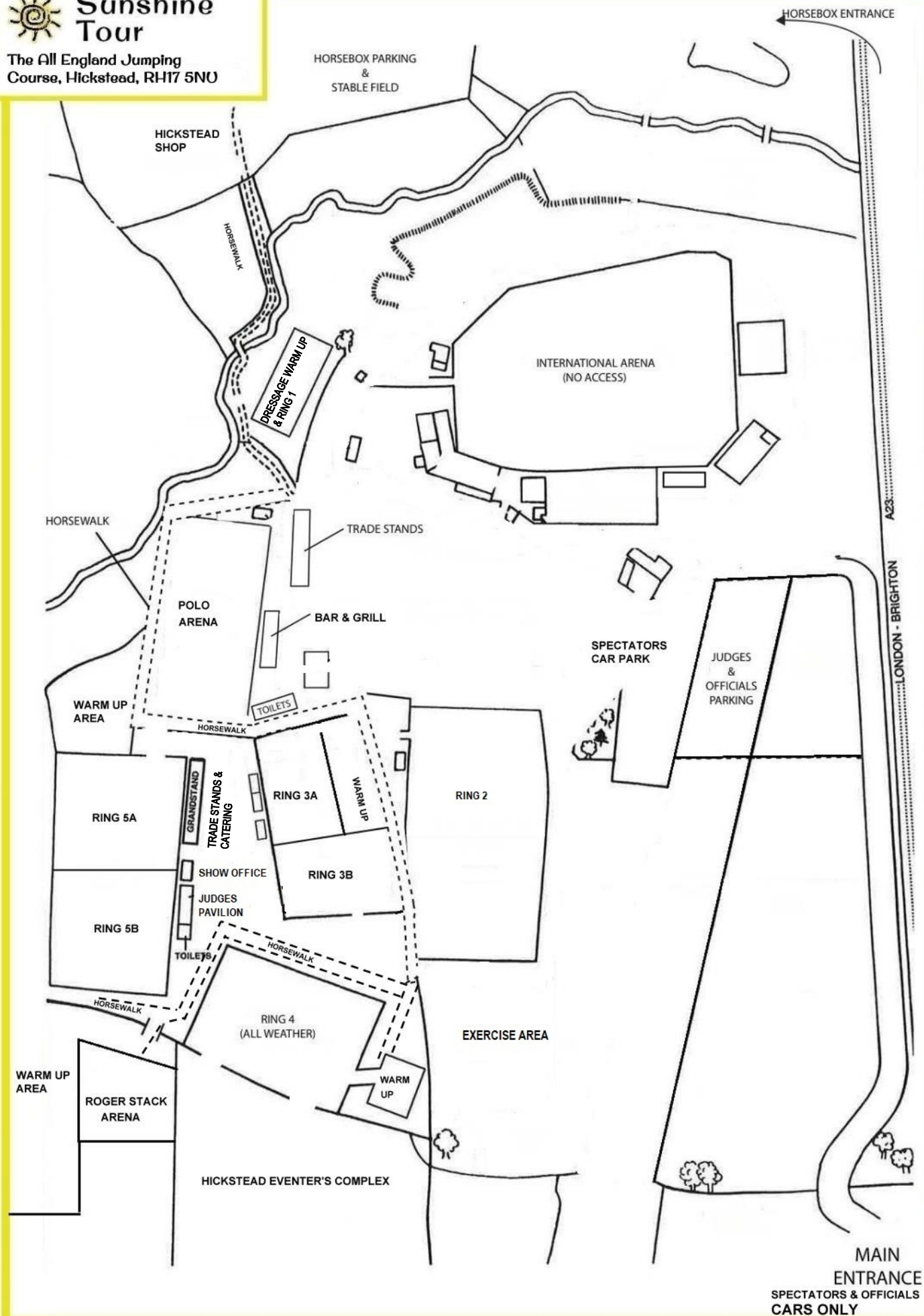
For nutrition advice or further information on our feeds please call +44 (0)1622 718487
Email info@saracenhorsefeeds.co.uk or visit www.saracenhorsefeeds.com





Sunshine Tour

The All England Jumping Course, Hickstead, RH17 5NU



FREQUENTLY ASKED QUESTIONS

What is the difference between Mini Tour, Small Tour, Grand Tour and Trophy Tour classes?

'Tours' are just categories. The basic difference is about the level of competition and experience of the competitors. Mini Tour is for very inexperienced riders, Small Tour is for novice combinations, Grand Tour and Trophy Tour are for more experienced. Before you enter, make sure that you check the rules & restrictions (in each discipline's page on www.sunshinetour.co.uk) for an explanation of who can go into which category.

How Many Championship Classes Can I Enter?

Dressage: you can enter **one** championship per qualification number, in 2 consecutive levels. **Show Jumping:** you can enter **one** championship per qualification number. Your championships must not be over 20cm difference from lowest class to highest. **Eventers Challenge:** you can enter **one** championship per qualification number, up to 3 levels, with due consideration for the fitness of your horse/pony. **Showing:** you can enter one championship per qualification number. You can enter any number of classes, with due consideration for the health of your horse/pony.

In all disciplines: you must have qualified during the current qualification period, submitted your qualification card/form and received qualification numbers before entry to a championship class. If you've qualified for more levels than you can take part in, then you must 'drop' the lowest level. All competitors can take part in training, warm up & open classes, in any discipline.

Can I enter Mini Tour, Small Tour AND Grand Tour classes?

Mini Tour is exclusive, so riders in Mini Tour classes cannot enter Small or Grand Tour classes in the same discipline. Generally speaking you can enter a mixture of Small and Grand Tour classes, just remember that if you want to compete in the more restricted class (i.e. Small Tour), you and your horse/pony must fit within the restrictions. If you are within those rules, then there is nothing to stop you competing in the Grand Tour as well. Please remember the 'spirit of competition' and don't compete below your genuine capability. Competitors considered to be competing below their ability may be removed from a class or changed to a more appropriate Tour.

I've qualified more than once for the same level of competition/class – can I enter more than once?

Yes, if you record each qualification it may be possible to upgrade or swap for something else so that you can make the most of your qualifications.

My horse or the qualified rider have taken part in affiliated competitions, can they still enter?

That will depend on how much money has been won, or points awarded, or level of competition you've taken part in and how long ago the points or winnings were earned. Please refer to the restrictions allocated to each class in the schedule (also available in each discipline's championship page on www.sunshinetour.co.uk) or if in doubt contact us at Sunshine Tour HQ on info@sunshinetour.co.uk for clarification.

Can I change the horse or rider/handler from the original qualification?

There's a simple answer to this one – absolutely not!

What happens if I've qualified, but then find that I'm 'overqualified' for the championship?

If you're overqualified, you can voluntarily move up a level e.g. if you've qualified for Prelim dressage, but don't fit into the restrictions for the Prelim championship but are eligible for the Novice, then you can enter the Novice instead. You can't downgrade from your original qualification, other than a 5cm tolerance in jumping classes.

I qualified in a showing class, but now find that the horse height restrictions or rider age restrictions are different in the championship class. Can I enter the original class that I qualified for?

The quick answer is - you go with the championship restrictions even if different from the qualifying class.

What's available for warm up?

There are open or training classes in every discipline, and arena familiarisation for dressage. There are also various warm up areas and arenas for use on the day. Please note: time permitted in sand warm arenas may be limited to next competitors due to compete. Additional space is available in grass warm up areas, but this may not be near to your competition arena. Lunging is not permitted in any warm up arena.

What happens if a championship class gets oversubscribed?

If this happens, then we will keep a waiting list and let you know if a space becomes available. Entries are taken on a first come-first served basis and classes might fill before the closing date. Qualification and pre-registration is not a guarantee of entry availability.

What happens if I have to withdraw after entering?

If you have to withdraw before the entry closing date, you will be charged an admin fee. If you withdraw after the close of entries, you will forfeit some or all of your entry fee depending on the reason for withdrawal and/or when you withdraw. See Rules & Conditions for details.

Does my horse have to be vaccinated to compete or stay overnight at Hickstead?

Yes, vaccination for equine influenza is required. Horses/ponies must have an up-to-date annual vaccination or have completed at least TWO initial vaccination injections. In either case, the last injection/booster must not be given after 6th September 2023.

Can I stable overnight? Can I bring my own bedding, hay and feed? Can I buy bedding, hay and feed?

Stabling is available to pre-book (brick stables sell out quickly). You can bring your own bedding, hay/haylage or you can pre-purchase bedding, hay and haylage (but not feed) with your stable booking. Limited amounts of bedding, hay and haylage may be available to purchase on the day (cash only). Please note collection times may be limited to afternoons and the buyer is responsible for collection (wheelbarrow recommended!).

Can I camp? Can I stay in my lorry? Does it cost to park and enter the show?

Horsebox and car with trailer parking is free. Separate accompanying cars park in a different field. You can camp or stay in your horsebox, with an additional 3m space for camping/eating/relaxing arrangements. Additional vehicles for overnight accommodation, like caravans, campervan, oversize tents, extra horseboxes pay £20 per night. There is a limited supply of electric hook-up available, pre-book with your entry.

Can I bring friends and family? Does it cost to park and enter the show?

Yes, definitely bring friends and family, there's no charge for spectator parking or entry to Hickstead showground.

What catering and food shopping is available?

Catering is available at various on-site outlets and a small provisions shop. Within walking distance you can find a pub, garage and Starbucks!

Will there be a photographer or souvenirs to buy?

SBM Photographic will be present throughout the show getting fabulous photos in every arena. Beewear will be supplying official Sunshine Tour hoodies, gilets, jackets, polo shirts and Sunshine Tour souvenir rosettes!!



Maxi-Top Equine

A high protein supplement to enhance muscle growth

Maxi-Top Equine is a rich source of branch chain amino acids containing 100% vegan ingredients.

Ideal for:

- ♦ Developing strength & topline
- ♦ Horses in intense training and competition
- ♦ Young growing horses
- ♦ During periods of rehabilitation after surgery or injury

**Buy 3
Get 1 Free**

Order Now



01730 815800 | sales@farmstable.com
Discover more at **www.farmstable.com**


**Farm &
Stable**

SUNSHINE TOUR CHAMPIONSHIPS 2023

GENERAL RULES & CONDITIONS

Welfare, Safety & Conduct

1. The organisers of this events have taken all reasonable precautions to ensure the health and safety of everyone present. For these measures to be effective, everyone must themselves take all reasonable precautions to avoid/prevent accidents occurring and must obey the instructions of the organisers/stewards/security/judges/officials.
2. The organisers, their representatives or helpers do not accept liability for injury, damage or loss suffered by spectators, competitors, their horses, grooms, friends, vehicles or property however caused and under any circumstances except proven negligence of the organisers.
3. The horses' welfare is paramount. Due consideration must be given for the animal's age, experience & fitness when entering and competing. Owners of young/inexperienced animals should consider the impact of journey time, unfamiliar surroundings, size of the showground and rings and the demands of the competition when selecting number/type of classes to participate in. The organisers reserve the right to limit the number and type of classes entered if doubts exist about the horse's welfare. Animals considered to be suffering from the demands of competition may be referred for veterinary assessment, withdrawn from further classes on one day or for the remainder of the competition.
4. Mistreatment of any animals shall not be tolerated, including use of force or misuse of equipment, whether under your supervision or not. Animals deemed to be sick or lame may be referred for vet's inspection and/or not be allowed to compete or be ridden on the showground.
5. Participants, (or their parents/guardians if under 18 years), must consider themselves competent to complete the activity for which they are entering. It is not the responsibility of the organisers to decide if a competitor is competent or their mount is suitable for the class. If the judge deems any rider or horse to be unsuitable / incompatible / unsafe to participate they will be asked to leave immediately.
6. All riders must be a suitable size and weight for the height/type of horse/pony for competition, warm up and exercise at any time on the showground. For guidance the rider should be no more than 20% of the horse's body weight. If doubt exists, the organisers decision is final.
7. Correctly fitting riding hat complying with current safety standards and safe footwear must be worn whilst mounted. Protective head gear is advised for all handlers/leaders and compulsory for Junior Handler class. Body protectors for riders are strongly recommended for show jumping and compulsory for arena eventing and eventers challenges.
8. Vet and medic will be on-site during competition hours. Farrier is on call (not on site). Out of hours veterinary cover will be available, contact details will be available on site. All veterinary or farrier expenses must be paid direct to the vet/farrier in attendance.
9. All visitors to Hickstead Showground, including but not limited to competitors, their grooms, owners, family and friends must comply with any restrictions and rules in place because of Covid-19 risk. Everyone is reminded to take personal responsibility for protecting themselves from the risks of infection and to be respectful to others including personal space, and taking additional hygiene measures to protect others.
10. All competitors and anyone accompanying a competitor in any capacity (family, child, friend, helper, instructor, driver etc!) are expected to support the spirit of the Sunshine Tour as a fun, fair and inclusive event. Any rude, argumentative or abusive behaviour in person or online, to other competitors, spectators, judges, officials or stewards will not be tolerated and could result in being banned from the showground immediately or future entries being barred. If you encounter a problem during the show, please contact security or show staff immediately.
11. If you contravene any welfare or conduct rule that results in your right to compete being withdrawn, you will not be eligible for refunds.

Media & Communication

1. Competitors and owners of horses/ponies competing at the Sunshine Tour agree to maintain their social media posts, comments and conversations in a fair and transparent manner.
2. The organisers reserve the right to monitor, intercept and review any media post relating to the Sunshine Tour, your participation and experience of the event.
3. Comments or posts about the Sunshine Tour should be clear that they represent a personal view and are not endorsed by the organiser.
4. Comments or posts must not be damaging to the name or reputation of the Sunshine Tour or deemed to be abusive, derogatory, threatening, scandalous or offensive to any Sunshine Tour competitor, official or volunteer. Any comment or post about the Sunshine Tour must be visible to the Sunshine Tour administrator and may be challenged and required to be removed.
5. Failure to maintain a reasonable and fair online communication about the Sunshine Tour may result in competitors' entries being cancelled or future entries being barred.
6. This event may be covered and featured by all types of media, including and not limited to journalists, reporters, television, radio and Sunshine Tour's own social media and news reports. Photos and video taken at the event may be transmitted, printed and used by media and Sunshine Tour for an unlimited period. Competitors who do not wish images to be used by media should state this with their entry.

Eligibility & Entries

1. To be eligible to compete in any championship class, entrants must have qualified in the current qualification period and recorded their qualification/s. The correct entry fee must be received to be eligible to compete/participate.
2. Absolutely no substitutions of horse or rider allowed in any championship class.
3. It is the responsibility of the competitor (or parent/guardian if under 18 years) to check if they are eligible to compete and that they comply with the rules applied to every class entered. Competitors must comply with restrictions applicable to their class on the day of championship.
4. The Sunshine Tour reserves the right to refuse an entry or refuse entry to the showground without having to state a reason.
5. In the event of insufficient entries, classes may be combined and judged as one class.
6. Riders who qualify for multiple levels of championship can compete in a maximum of 5 levels in show jumping, 3 levels in eventers challenge or 2 consecutive levels in dressage. If you qualify for more levels, you must relinquish the lowest level/s.
7. Competitors must be 3 years old or over on the day of the championships, there's no upper age limit. Horses/ponies must be 4 years old or over to compete in ridden classes. Stallions are welcome provided they are ridden/handled by an experienced person, displaying appropriate tail ribbons, are well behaved and not causing a nuisance or danger to other competitors or their horses.

Continued on next page

GENERAL RULES & CONDITIONS continued

Refunds & Fees

1. We reserve the right to alter any part or the whole of the schedule at any time. In the event of a class being cancelled, refunds will be issued.
2. Withdrawals received up to the close of entries will be accepted and refunded.
3. Competitors applying for a refund after close of entries must submit evidence verified by a hospital, doctor or vet certificate. Only a doctor or vet can provide evidence for a medical withdrawal, correspondence from farriers, physios or other health professionals are not accepted.
4. Only acute and recent medical conditions, traumas or illnesses will be acceptable, pre-existing or chronic conditions will not be accepted for the purposes of generating a refund.
5. Refunds are considered on a case by case basis, within the following time limits: 11th to 20th August may be eligible for 75% refund; 21st to 31st August 50% refund; 1st September to 7th September 25% refund; 8th September onward - no refund for any reason.
6. Notification must be received in writing to the Sunshine Tour office by email info@sunshinetour.co.uk or by letter to Sunshine Tour HQ. Text, Facebook, Messenger or WhatsApp messages or phone calls are not accepted as official withdrawal notification. Medical verification to apply for a partial refund must be received by 30th September following the current show.
7. Bad weather - If weather or ground conditions are poor it is the responsibility of competitors to confirm that the event is running by checking website www.sunshinetour.co.uk on the evening before or morning of the competition. Every effort will be made to re-schedule, but in the event of the competition being cancelled, entry fees minus administration charge will be returned to competitors.

Competition Rules & Prizes

1. Rules for guidance: Dressage: British Dressage; Show Jumping: British Showjumping; Showing: The Showing Register; Eventers: British Eventing & Sunshine Tour. All decisions are subject to Sunshine Tour rulings and might not reflect exact conditions of national rule books.
2. Dispensation for exception to rules must be ratified by the relevant society (BD, BS, BE), submitted with entry and presented to the secretary and steward on the day of competition, prior to competing.
3. It is the competitors responsibility to compete in approved tack & clothing. Spot checks may be carried out to check for compliance with relevant rules (BD, BS, BE). Competitors found to be competing with 'illegal' tack may be disqualified even if they have already competed.
4. Objections: Sunshine Tour uses expert judges and their decision is to be respected. Any objections about the conduct of classes must be brought to the organiser's attention within 60 minutes of the incident and we will make every effort to resolve problems. If we cannot resolve the problem and you wish to lodge a formal complaint and request further investigation, you should lodge your complaint on the day of competition in writing with the secretary and supported by a £50 deposit.
5. Video evidence is not usually admissible to support a complaint. We will view video evidence as part of an investigation, but in the event of a discrepancy between the judge's view and a video view, the judge's must take priority.
6. Prizes stated in the schedule are subject to alteration or substitution. Prize winners may have their eligibility checked prior to prize collection and some prizes may require collection at a later date or incur postage costs. In the event of insufficient entries some prizes will be withheld.

Showground Rules & Security

1. Whilst on the showground, all horse/ponies must wear a bridle and display correct competitor number. This applies at all times on the showground, even walking in-hand or exercise/familiarisation. You're not required to display competitor number in stable field or parking area.
2. Horse passports must be brought to the showground. If you are travelling separately, the passport should be with the horse. Passports must be available for inspection up on arrival, at any time if requested by security or show staff in the parking area.
3. Horses/ponies must have up-to-date annual vaccination or have completed at least TWO initial vaccination injections. In either case, the last injection/booster must not be given after 6th September 2023.
4. Scooters, bicycles, skate/hover boards, tricycles etc are NOT ALLOWED on the showground (does not apply to stable field).
5. Horse Walks: just walking allowed in the horse walk! No holding horses or stopping and chatting with friends! No trotting or cantering.
6. All dogs must be kept on a lead at all times. Owners who allow their dogs to run loose on the showground, stable area or parking areas will be required to remove them from the premises immediately.
7. No access to Hickstead's international arena including the surround and the Derby bank at any time, day or night, not even people on foot!
8. Security are on duty 24 hours a day. Any incident should be reported to WH Security or Sunshine Tour show secretary or show director immediately. 24 hour contact 07904 898696 (only for emergencies between 9pm and 6am).
9. Good conduct and reasonable behaviour is expected at all times. WH Security have the right to summon police/evict/detain persons deemed to be behaving in an unreasonable/abusive/dangerous manner.

Stabling, Camping & Staying Overnight

1. Competitors and their friends & family are permitted to stay overnight in their horsebox or trailer for free if their horse is being stabled at the showground. Additional vehicles for staying overnight, e.g. campervan, caravan, additional horsebox etc. will incur a charge per night.
2. Good neighbour, good conduct and considerate noise levels are expected in the camping area. Noise should be kept to a minimum between 11pm and 6am. Campers found to be causing noise or nuisance to their neighbours may be evicted by security.
3. No open fires. Small generators are permitted, only silent generators can be left on after 11pm and operated before 6am.
4. On site toilets and showers are available. Do not empty caravan/lorry toilet contents into the public toilets, an Elsan point is provided.
5. Dogs must be kept on a lead in stables and camping areas. If kept under control, dogs can be off lead in outside fields away from camping & stables. All dog mess must be bagged and disposed of in a bin. Dogs deemed to be causing a nuisance should be reported to WH security.
6. Horse passports must be presented to the stable manager when claiming your stable.
7. £10 cash deposit per stable is required upon arrival. Deposit will be returned on departure provided stable has been mucked out - your stable may be inspected or you may be asked to provide proof. You may be issued with a deposit or stable allocation slips, which should be retained to claim your deposit back.
8. If your stable is not mucked out when you arrive, inform the stable manager immediately. Please note: Stables at Hickstead are deep litter, some stables have plenty of bedding left by previous occupant, some do not, under bedding may be damp, you are advised to bring or pre-purchase some bedding to freshen up / add depth to the bed. Do not muck out to the ground unless you have a considerable amount of clean bedding to replace removed bed. Shavings or flax bedding only. Straw, paper or cardboard are not permitted,